

# Anti-ATP synthase subunit 1, mitochondrial antibody

Catalog: PHY2146S

## Product Information

<b>Description:</b>	Rabbit polyclonal antibody
<b>Background:</b>	Mitochondrial FOF1-ATP synthase is also called Complex V and it synthesizes ATP from ADP and Pi using the proton motive force created by respiratory electron transport. ATP1 (ATMG01190/AT2G07698) is a subunit of mitochondrial FOF1-ATP synthase in <i>Arabidopsis</i> .
<b>Synonyms:</b>	ATP1, ATP SYNTHASE SUBUNIT 1
<b>Immunogen:</b>	KLH-conjugated synthetic peptide (15 aa from N terminal section) derived from <i>Arabidopsis thaliana</i> ATP1 (ATMG01190) and AT2G07698.
<b>Form:</b>	Lyophilized
<b>Quantity:</b>	150 µg
<b>Purification:</b>	Serum Peptide affinity form antibody available upon request at <a href="mailto:info@phytoab.com">info@phytoab.com</a> .
<b>Reconstitution:</b>	Reconstitution with 150 µl of sterile water. "Note: please spin tube briefly prior to opening it to avoid any losses that might occur from lyophilized material adhering to the cap or sides of the tube".
<b>Stability &amp; Storage:</b>	Use a manual defrost freezer and avoid repeated freeze-thaw cycles. 12 months from date of receipt, -20 to -70°C as supplied. 6 months, -20 to -70°C under sterile conditions after reconstitution. 1 month, 2 to 8°C under sterile conditions after reconstitution.
<b>Shipping:</b>	The product is shipped at 4°C. Upon receipt, store it immediately at the temperature recommended above.

## Application Information

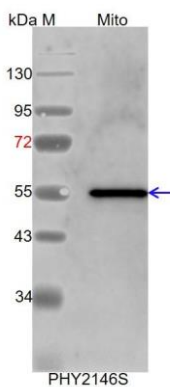
<b>Recommended Dilution:</b>	Western Blot (1:1000-1:2000) Note: Optimal dilutions/concentrations should be determined by the end user.
<b>Expected / apparent MW:</b>	55 kDa (ATMG01190), 86 kDa (AT2G07698)
<b>Confirmed Reactivity:</b>	<i>Arabidopsis thaliana</i>
<b>Predicted Reactivity:</b>	Among species analyzed, the sequence of the synthetic peptide used

Research Use Only

for immunization is 100% homologues with the sequence in *Solanum tuberosum*, *Glycine max*, *Medicago truncatula*, *Sorghum bicolor*, *Gossypium raimondii*, *Solanum lycopersicum*, *Triticum aestivum*, *Nicotiana tabacum*, *Brassica rapa*, *Brassica napus*, *Populus trichocarpa*, *Vitis vinifera*, *Zea mays*, *Cucumis sativus*, *Gossypium raimondii*, *Panicum virgatum*, *Spinacia oleracea*, and 80-99% homologues with the sequence in *Physcomitrella patens*.

For more species homologues information, please contact tech support at [tech@phytoab.com](mailto:tech@phytoab.com).

## Application Example



Mito: 15 µg mitochondria protein from *Arabidopsis thaliana*.

**Electrophoresis:** 15% SDS-PAGE

**Transfer:** blotting to NC (nitrocellulose) membrane for 1 h.

**Blocking:** 5% skim milk at RT or 4°C for 1 h.

**Primary antibody:** 1:1000 dilution overnight at 4°C.

**Secondary antibody:** 1:10000 dilution using Goat Anti-Rabbit IgG H&L(HRP) (Cat# PHY6000).

**Detection:** using chemiluminescence substrate and image were captured with CCD camera.