

Anti-One helix protein 2 antibody

Catalog: PHY0339

Product Information

Description:	Rabbit polyclonal antibody
Background:	OHP2 is a novel member of the Lhc family from Arabidopsis with one predicted transmembrane alpha-helix closely related to helix I of Lhc protein from PSI (Lhca4). It is associated with PSI under low- or high-light conditions. It forms a complex with OHP1 and HCF244, D1, D2, PsbI, and cytochrome b559 at an early stage of PSII de novo assembly and of PSII repair under high-light conditions.
Synonyms:	OHP2, ONE-HELIX PROTEIN 2
Immunogen:	Recombinant protein (1-172 aa) derived from Arabidopsis thaliana OHP2 (AT1G34000).
Form:	Lyophilized
Quantity:	100 µg
Purification:	Protein A purified
Reconstitution:	Reconstitution with 100 µl of 0.01 M sterile PBS. "Note: please spin tube briefly prior to opening it to avoid any losses that might occur from lyophilized material adhering to the cap or sides of the tube".
Stability & Storage:	Use a manual defrost freezer and avoid repeated freeze-thaw cycles. 12 months from date of receipt, -20 to -70°C as supplied. 6 months, -20 to -70°C under sterile conditions after reconstitution. 1 month, 2 to 8°C under sterile conditions after reconstitution.
Shipping:	The product is shipped at 4°C. Upon receipt, store it immediately at the temperature recommended above.

Application Information

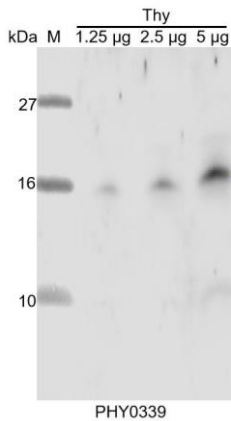
Recommended Dilution:	Western Blot (1:500-1:1000) Note: Optimal dilutions/concentrations should be determined by the end user.
Expected / apparent MW:	19 / 16 kDa
Confirmed Reactivity:	<i>Arabidopsis thaliana</i>

Research Use Only

Predicted Reactivity:

For more species homologues information, please contact tech support at tech@phytoab.com.

Application Example



Thy: thylakoid membrane protein from *Arabidopsis thaliana* containing 1.25 µg, 2.5 µg and 6 µg of chlorophyll, respectively.

Electrophoresis: Tricine-SDS-PAGE

Transfer: blotting to NC (nitrocellulose) membrane for 1 h.

Blocking: 5% skim milk at RT or 4°C for 1 h.

Primary antibody: 1:500 dilution overnight at 4°C.

Secondary antibody: 1:10000 dilution using Goat Anti-Rabbit IgG H&L(HRP) (Cat# PHY6000).

Detection: using chemiluminescence substrate and image were captured with CCD camera.