

Anti-Mg-protoporphyrin IX chelatase antibody

Catalog: PHY5509S

Product Information

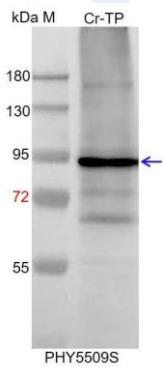
Description:	Rabbit polyclonal antibody
Background:	CrCHLD is involved in chlorophyll biosynthesis. It catalyzes the insertion of magnesium ion into protoporphyrin IX to yield Mg-protoporphyrin IX.
Synonyms:	CrCHLD
Immunogen:	Recombinant protein of CrCHLD (63-767aa) derived from <i>Chlamydomonas reinhardtii</i> Cre05.g242000.
Form:	Lyophilized
Quantity:	150 µg
Purification:	Serum
Reconstitution:	Reconstitution with 150 µl of sterile water. "Note: please spin tube briefly prior to opening it to avoid any losses that might occur from lyophilized material adhering to the cap or sides of the tube".
Stability & Storage:	Use a manual defrost freezer and avoid repeated freeze-thaw cycles. 12 months from date of receipt, -20 to -70°C as supplied. 6 months, -20 to -70°C under sterile conditions after reconstitution. 1 month, 2 to 8°C under sterile conditions after reconstitution.
Shipping:	The product is shipped at 4°C. Upon receipt, store it immediately at the temperature recommended above.

Application Information

Recommended Dilution:	Western Blot (1:1000-1:2000) Note: Optimal dilutions/concentrations should be determined by the end user.
Expected / apparent MW:	83 kDa
Confirmed Reactivity:	<i>Chlamydomonas reinhardtii</i>
Predicted Reactivity:	For homologues with other species especially algae, please contact tech support at tech@phytoab.com .

Research Use Only

Application Example



Cr-TP: 20 µg total protein from *Chlamydomonas reinhardtii*.

Electrophoresis: 10% SDS-PAGE

Transfer: blotting to NC (nitrocellulose) membrane for 1 h.

Blocking: 5% skim milk at RT or 4°C for 1 h.

Primary antibody: 1:1000 dilution overnight at 4°C.

Secondary antibody: 1:10000 dilution using Goat Anti-Rabbit IgG H&L(HRP)
(Cat# PHY6000).

Detection: using chemiluminescence substrate and image were
captured with CCD camera.