

# Anti-PsbO subunit of oxygen evolving complex of Photosystem II antibody

Catalog: PHY5101S

## Product Information

<b>Description:</b>	Rabbit polyclonal antibody
<b>Background:</b>	PsbO is a subunit of the oxygen evolving complex of Photosystem II, encoded by the <i>PsbO</i> ( <i>sll0427</i> ). In <i>Arabidopsis thaliana</i> , the PsbO proteins are encoded by two genes: <i>PsbO1</i> ( <i>AT5G66570</i> ) and <i>PsbO2</i> ( <i>AT3G50820</i> ). <i>PsbO1</i> is the major isoform in <i>Arabidopsis</i> .
<b>Synonyms:</b>	PsbO
<b>Immunogen:</b>	Recombinant protein of PsbO (1-274aa) derived from <i>Synechocystis sp.</i> PCC 6803 ( <i>sll0427</i> ).
<b>Form:</b>	Lyophilized
<b>Quantity:</b>	150 µg
<b>Purification:</b>	Serum
<b>Reconstitution:</b>	Reconstitution with 150 µl of sterile water. "Note: please spin tube briefly prior to opening it to avoid any losses that might occur from lyophilized material adhering to the cap or sides of the tube".
<b>Stability &amp; Storage:</b>	Use a manual defrost freezer and avoid repeated freeze-thaw cycles. 12 months from date of receipt, -20 to -70°C as supplied. 6 months, -20 to -70°C under sterile conditions after reconstitution. 1 month, 2 to 8°C under sterile conditions after reconstitution.
<b>Shipping:</b>	The product is shipped at 4°C. Upon receipt, store it immediately at the temperature recommended above.

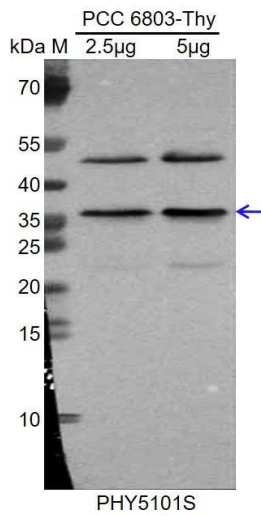
## Application Information

<b>Recommended Dilution:</b>	Western Blot (1:1000-1:2000) Note: Optimal dilutions/concentrations should be determined by the end user.
<b>Expected / apparent MW:</b>	30.4 / 35 kDa
<b>Confirmed Reactivity:</b>	<i>Synechocystis sp.</i> PCC 6803
<b>Predicted Reactivity:</b>	For more species homologues information, please contact tech

Research Use Only

support at [tech@phytoab.com](mailto:tech@phytoab.com).

## Application Example



PCC 6803-Thy is thylakoid membrane protein from *Synechocystis sp.* PCC 6803 cells containing 2.5 µg and 5 µg of protein, respectively.

**Electrophoresis:** 12% SDS-Urea-PAGE.

**Transfer:** blotting to NC (nitrocellulose) membrane for 1h.

**Blocking:** 5% skim milk at RT for 1h.

**Primary antibody:** 1:1000 dilution overnight at 4°C.

**Secondary antibody:** 1:10000 dilution using Goat Anti-Rabbit IgG H&L (Cat# PHY6000).

**Detection:** using chemiluminescence substrate and image were captured with CCD camera.