

Anti-pyruvate, phosphate dikinase 1, chloroplastic isoform X1 antibody

Catalog: PHY2135A

Product Information

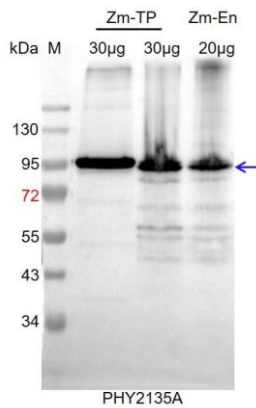
Description:	Rabbit polyclonal antibody
Background:	PPDK
Synonyms:	PPDK
Immunogen:	KLH-conjugated synthetic peptide (11 aa from central section) derived from <i>Zea mays</i> PPDK (XP_020394793).
Form:	Lyophilized
Quantity:	150 µg
Purification:	Immunogen affinity purified
Reconstitution:	Reconstitution with 150 µl of 0.01 M sterile PBS. "Note: please spin tube briefly prior to opening it to avoid any losses that might occur from lyophilized material adhering to the cap or sides of the tube".
Stability & Storage:	Use a manual defrost freezer and avoid repeated freeze-thaw cycles. 12 months from date of receipt, -20 to -70°C as supplied. 6 months, -20 to -70°C under sterile conditions after reconstitution. 1 month, 2 to 8°C under sterile conditions after reconstitution.
Shipping:	The product is shipped at 4°C. Upon receipt, store it immediately at the temperature recommended above.

Application Information

Recommended Dilution:	Western Blot (1:1000-1:2000) Note: Optimal dilutions/concentrations should be determined by the end user.
Expected / apparent MW:	108 / 96 kDa
Confirmed Reactivity:	<i>Zea mays</i>
Predicted Reactivity:	For more species homologues information, please contact tech support at tech@phytoab.com .

Application Example

Research Use Only



Zm-TP: 30 µg total protein from *Zea mays*.

Zm-En: 20 µg total protein from *Zea mays* after 35 days of pollination.

Electrophoresis: 10% SDS-PAGE

Transfer: blotting to NC (nitrocellulose) membrane for 1 h.

Blocking: 5% skim milk at RT or 4°C for 1 h.

Primary antibody: 1:1000 dilution overnight at 4°C.

Secondary antibody: 1:10000 dilution using Goat Anti-Rabbit IgG H&L(HRP) (Cat# PHY6000).

Detection: using chemiluminescence substrate and image were captured with CCD camera.