

# Anti-Chloroplastic ATP-dependent Clp protease proteolytic subunit 1, C-terminal antibody

Catalog: PHY2073S

## Product Information

<b>Description:</b>	Rabbit polyclonal antibody
<b>Background:</b>	CLPP1 cleaves peptides in various proteins in a process that requires ATP hydrolysis. It has a chymotrypsin-like activity, and plays a major role in the degradation of misfolded proteins.
<b>Synonyms:</b>	CLPP1, CASEINOLYTIC PROTEASE P 1, PCLPP, PLASTID-ENCODED CLP P
<b>Immunogen:</b>	KLH-conjugated synthetic peptide (16 aa from C terminal section) derived from <i>Arabidopsis thaliana</i> CLPP1 (ATCG00670).
<b>Form:</b>	Lyophilized
<b>Quantity:</b>	150 µg
<b>Purification:</b>	Serum Peptide affinity form antibody available upon request at <a href="mailto:info@phytoab.com">info@phytoab.com</a> .
<b>Reconstitution:</b>	Reconstitution with 150 µl of sterile water. "Note: please spin tube briefly prior to opening it to avoid any losses that might occur from lyophilized material adhering to the cap or sides of the tube".
<b>Stability &amp; Storage:</b>	Use a manual defrost freezer and avoid repeated freeze-thaw cycles. 12 months from date of receipt, -20 to -70°C as supplied. 6 months, -20 to -70°C under sterile conditions after reconstitution. 1 month, 2 to 8°C under sterile conditions after reconstitution.
<b>Shipping:</b>	The product is shipped at 4°C. Upon receipt, store it immediately at the temperature recommended above.

## Application Information

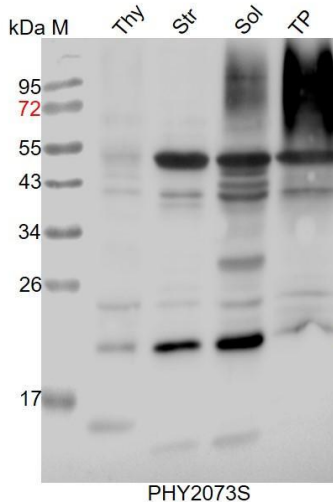
<b>Recommended Dilution:</b>	Western Blot (1:1000-1:2000) Note: Optimal dilutions/concentrations should be determined by the end user.
<b>Expected / apparent MW:</b>	22 kDa
<b>Confirmed Reactivity:</b>	<i>Arabidopsis thaliana</i>

Research Use Only

### Predicted Reactivity:

Among species analyzed, the sequence of the synthetic peptide used for immunization is 100% homologues with the sequence in *Brassica napus*, *Brassica rapa*, and 80-99% homologues with the sequence in *Vitis vinifera*, *Gossypium raimondii*, *Spinacia oleracea*, *Glycine max*, *Nicotiana tabacum*, *Cucumis sativus*, *Solanum lycopersicum*, *Solanum tuberosum subsp. andigenum*, *Populus trichocarpa*. For more species homologues information, please contact tech support at [tech@phytoab.com](mailto:tech@phytoab.com).

### Application Example



Thy: thylakoid membrane protein from *Arabidopsis thaliana* containing 2.5 µg of chlorophyll.

Str: 12 µg stromal protein from *Arabidopsis thaliana*.

Sol: 30 µg soluble protein from *Arabidopsis thaliana*.

TP: 20 µg total protein from *Arabidopsis thaliana*.

**Electrophoresis:** 15% SDS-PAGE

**Transfer:** blotting to NC (nitrocellulose) membrane for 1 h.

**Blocking:** 5% skim milk at RT or 4°C for 1 h.

**Primary antibody:** 1:1000 dilution overnight at 4°C.

**Secondary antibody:** 1:10000 dilution using Goat Anti-Rabbit IgG H&L(HRP) (Cat# PHY6000).

**Detection:** using chemiluminescence substrate and image were captured with CCD camera.