

Anti-Chloroplastic ATP-dependent Clp protease proteolytic subunit 1 antibody

Catalog: PHY2074S

Product Information

Description:	Rabbit polyclonal antibody
Background:	CLPP1 cleaves peptides in various proteins in a process that requires ATP hydrolysis. It has a chymotrypsin-like activity, and plays a major role in the degradation of misfolded proteins.
Synonyms:	CLPP1, CASEINOLYTIC PROTEASE P 1, PCLPP, PLASTID-ENCODED CLP P
Immunogen:	KLH-conjugated synthetic peptide (16 aa from C terminal section) derived from <i>Arabidopsis thaliana</i> CLPP1 (ATCG00670).
Form:	Lyophilized
Quantity:	150 µg
Purification:	Serum Peptide affinity form antibody available upon request at info@phytoab.com .
Reconstitution:	Reconstitution with 150 µl of sterile water. "Note: please spin tube briefly prior to opening it to avoid any losses that might occur from lyophilized material adhering to the cap or sides of the tube".
Stability & Storage:	Use a manual defrost freezer and avoid repeated freeze-thaw cycles. 12 months from date of receipt, -20 to -70°C as supplied. 6 months, -20 to -70°C under sterile conditions after reconstitution. 1 month, 2 to 8°C under sterile conditions after reconstitution.
Shipping:	The product is shipped at 4°C. Upon receipt, store it immediately at the temperature recommended above.

Application Information

Recommended Dilution:	Western Blot (1:1000-1:2000) Note: Optimal dilutions/concentrations should be determined by the end user.
Expected / apparent MW:	22 kDa
Confirmed Reactivity:	<i>Arabidopsis thaliana</i>

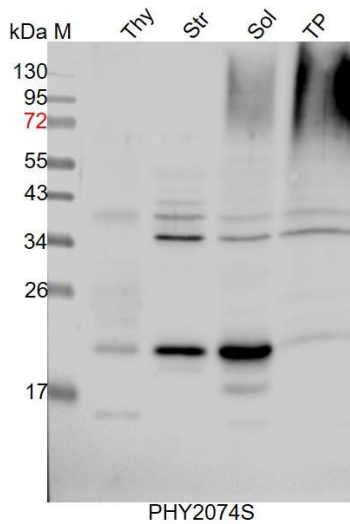
Research Use Only

Predicted Reactivity:

Among species analyzed, the sequence of the synthetic peptide used for immunization is 100% homologues with the sequence in *Glycine max*, *Gossypium raimondii*, and 80-99% homologues with the sequence in *Nicotiana tabacum*, *Spinacia oleracea*, *Brassica rapa*, *Brassica napus*, *Populus trichocarpa*.

For more species homologues information, please contact tech support at tech@phytoab.com.

Application Example



Thy: thylakoid membrane protein from *Arabidopsis thaliana* containing 2.5 µg of chlorophyll.

Str: 12 µg stromal protein from *Arabidopsis thaliana*.

Sol: 30 µg soluble protein from *Arabidopsis thaliana*.

TP: 20 µg total protein from *Arabidopsis thaliana*.

Electrophoresis: 15% SDS-PAGE

Transfer: blotting to NC (nitrocellulose) membrane for 1 h.

Blocking: 5% skim milk at RT or 4°C for 1 h.

← **Primary antibody:** 1:1000 dilution overnight at 4°C.

Secondary antibody: 1:10000 dilution using Goat Anti-Rabbit IgG H&L(HRP) (Cat# PHY6000).

Detection: using chemiluminescence substrate and image were captured with CCD camera.