

Anti-C-phyco cyanin beta chain antibody

Catalog: PHY5285S

Product Information

Description:	Rabbit polyclonal antibody
Background:	Phycocyanin beta subunit, encoded by the <i>CpcB</i> (sll1577) in <i>Synechocystis</i> sp. PCC 6803.
Synonyms:	CpcB
Immunogen:	KLH-conjugated synthetic peptide (14 aa from N terminal section) derived from <i>Synechocystis</i> sp. PCC 6803 CpcB (sll0416).
Form:	Lyophilized
Quantity:	150 µg
Purification:	Serum Peptide affinity form antibody available upon request at info@phytoab.com .
Reconstitution:	Reconstitution with 150 µl of sterile water. "Note: please spin tube briefly prior to opening it to avoid any losses that might occur from lyophilized material adhering to the cap or sides of the tube".
Stability & Storage:	Use a manual defrost freezer and avoid repeated freeze-thaw cycles. 12 months from date of receipt, -20 to -70°C as supplied. 6 months, -20 to -70°C under sterile conditions after reconstitution. 1 month, 2 to 8°C under sterile conditions after reconstitution.
Shipping:	The product is shipped at 4°C. Upon receipt, store it immediately at the temperature recommended above.

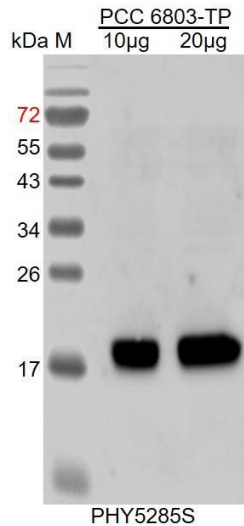
Application Information

Recommended Dilution:	Western Blot (1:1000-1:2000) Note: Optimal dilutions/concentrations should be determined by the end user.
Expected / apparent MW:	18 kDa
Confirmed Reactivity:	<i>Synechocystis</i> sp. PCC 6803
Predicted Reactivity:	Among species analyzed, the sequence of the synthetic peptide used for immunization is 80-99% homologues with the sequence in <i>Synechococcus elongatus</i> PCC 7942.

Research Use Only

For homologues with other species especially algae, please contact tech support at tech@phytoab.com.

Application Example



PCC 6803-TP: 10 µg and 20 µg whole-cell lysate protein from WT of *Synechocystis sp.* PCC 6803, respectively.

Electrophoresis: 15% SDS-PAGE

Transfer: blotting to NC (nitrocellulose) membrane for 1 h.

Blocking: 5% skim milk at RT or 4°C for 2 h.

Primary antibody: 1:2000 dilution overnight at 4°C.

Secondary antibody: 1:10000 dilution using Goat Anti-Rabbit IgG H&L (HRP) (Cat# PHY6000).

Detection: using chemiluminescence substrate and image were captured with CCD camera.