

# Anti-Photosynthesis Affected Mutant 68 antibody

Catalog: PHY2289A

## Product Information

<b>Description:</b>	Rabbit polyclonal antibody
<b>Background:</b>	PAM68 is a conserved integral membrane protein found in cyanobacterial and eukaryotic thylakoids and interacts with several PSII core proteins and known PSII assembly factors, such as D1, D2, and so on. PAM68 proteins promote early steps in PSII biogenesis by associating with an early intermediate complex that might contain D1 and the assembly factor LPA1.
<b>Synonyms:</b>	PAM68, PHOTOSYNTHESIS AFFECTED MUTANT 68
<b>Immunogen:</b>	KLH-conjugated synthetic peptide (20 aa from N terminal section) derived from <i>Arabidopsis thaliana</i> PAM68 (AT4G19100).
<b>Form:</b>	Lyophilized
<b>Quantity:</b>	150 µg
<b>Purification:</b>	Immunogen affinity purified
<b>Reconstitution:</b>	Reconstitution with 150 µl of 0.01 M sterile PBS. "Note: please spin tube briefly prior to opening it to avoid any losses that might occur from lyophilized material adhering to the cap or sides of the tube".
<b>Stability &amp; Storage:</b>	Use a manual defrost freezer and avoid repeated freeze-thaw cycles. 12 months from date of receipt, -20 to -70°C as supplied. 6 months, -20 to -70°C under sterile conditions after reconstitution. 1 month, 2 to 8°C under sterile conditions after reconstitution.
<b>Shipping:</b>	The product is shipped at 4°C. Upon receipt, store it immediately at the temperature recommended above.

## Application Information

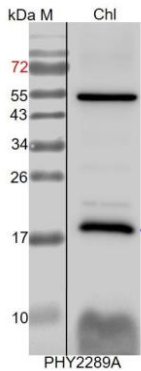
<b>Recommended Dilution:</b>	Western Blot (1:1000-1:2000) Note: Optimal dilutions/concentrations should be determined by the end user.
<b>Expected/ apparent MW:</b>	24 / 19 kDa
<b>Confirmed Reactivity:</b>	<i>Arabidopsis thaliana</i>
<b>Predicted Reactivity:</b>	Among species analyzed, the sequence of the synthetic peptide used

Research Use Only

for immunization is 80-99% homologues with the sequence in *Brassica rapa*, *Brassica napus*.

For more species homologues information, please contact tech support at [tech@phytoab.com](mailto:tech@phytoab.com).

## Application Example



Chl: 80 µg total chloroplast protein from *Arabidopsis thaliana*.

**Electrophoresis:** 15% SDS-PAGE

**Transfer:** blotting to NC (nitrocellulose) membrane for 1 h.

**Blocking:** 5% skim milk at RT or 4°C for 1 h.

**Primary antibody:** 1:2000 dilution overnight at 4°C.

**Secondary antibody:** 1:10000 dilution using Goat Anti-Rabbit IgG H&L(HRP) (Cat# PHY6000).

**Detection:** using chemiluminescence substrate and image were captured with CCD camera.