

Anti-NADP-dependent malic enzyme 2 antibody

Catalog: PHY2303A

Product Information

Description:	Rabbit polyclonal antibody
Background:	NADP-dependent malic enzyme (NADP-ME) catalyzes the oxidative decarboxylation of malate to generate pyruvate, CO ₂ and NADPH. <i>Arabidopsis thaliana</i> possesses three cytosolic (NADP-ME1-3) and one plastidic NADP-ME isoforms (NADP-ME4, AT1G79750). NADP-ME2 (AT5G11670) is responsible for most of the NADP-ME activity measured in mature organs and has been involved in sugar metabolism in veins and in the oxidative burst triggered by hemibiotrophic fungal pathogen infection.
Synonyms:	NADP-ME2, ARABIDOPSIS THALIANA NADP-MALIC ENZYME 2, ATNADP-ME2, NADP-MALIC ENZYME 2
Immunogen:	KLH-conjugated synthetic peptide (18 aa from C terminal section) derived from <i>Arabidopsis thaliana</i> NADP-ME2 (AT5G11670).
Form:	Lyophilized
Quantity:	150 µg
Purification:	Immunogen affinity purified
Reconstitution:	Reconstitution with 150 µl of 0.01 M sterile PBS. "Note: please spin tube briefly prior to opening it to avoid any losses that might occur from lyophilized material adhering to the cap or sides of the tube".
Stability & Storage:	Use a manual defrost freezer and avoid repeated freeze-thaw cycles. 12 months from date of receipt, -20 to -70°C as supplied. 6 months, -20 to -70°C under sterile conditions after reconstitution. 1 month, 2 to 8°C under sterile conditions after reconstitution.
Shipping:	The product is shipped at 4°C. Upon receipt, store it immediately at the temperature recommended above.

Application Information

Recommended Dilution:	Western Blot (1:1000-1:2000) Note: Optimal dilutions/concentrations should be determined by the end user.
Expected / apparent MW:	64 kDa

Research Use Only

Confirmed Reactivity:

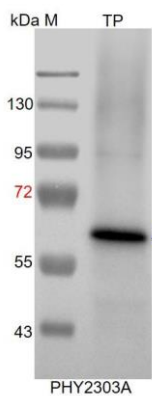
Arabidopsis thaliana

Predicted Reactivity:

Among species analyzed, the sequence of the synthetic peptide used for immunization is 80-99% homologues with the sequence in *Sorghum bicolor*, *Brassica rapa*, *Brassica napus*, *Zea mays*, *Glycine max*, *Medicago truncatula*, *Spinacia oleracea*, *Populus trichocarpa*, *Gossypium raimondii*, *Setaria viridis*, *Cucumis sativus*, *Nicotiana tabacum*, *Oryza sativa*, *Panicum virgatum*.

For more species homologues information, please contact tech support at tech@phytoab.com.

Application Example



TP: 30 µg total protein from *Arabidopsis thaliana*.

Electrophoresis: 12% SDS-PAGE

Transfer: blotting to NC (nitrocellulose) membrane for 1 h.

Blocking: 5% skim milk at RT or 4°C for 1 h.

Primary antibody: 1:2000 dilution overnight at 4°C.

Secondary antibody: 1:10000 dilution using Goat Anti-Rabbit IgG H&L(HRP) (Cat# PHY6000).

Detection: using chemiluminescence substrate and image were captured with CCD camera.