

Anti-PsbH subunit of Photosystem II antibody

Catalog: PHY2336

Product Information

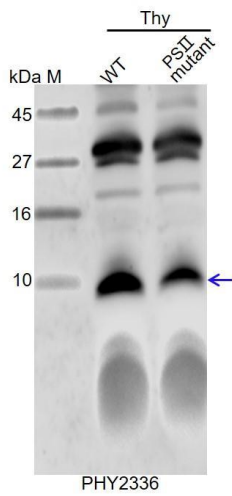
Description:	Rabbit polyclonal antibody
Background:	PsbH is an 8-kD phosphoprotein in the Photosystem II oxygen evolving core. The exact molecular function of PsbH has not been determined but it may play a role in mediating electron transfer between the secondary quinone acceptors, QA and QB.
Synonyms:	PsbH, PHOTOSYSTEM II REACTION CENTER PROTEIN H
Immunogen:	Recombinant protein of PsbH derived from <i>Arabidopsis thaliana</i> ATCG00710.
Form:	Lyophilized
Quantity:	150µg
Purification:	Protein A purified
Reconstitution:	Reconstitution with 150 µl of 0.01 M sterile PBS. "Note: please spin tube briefly prior to opening it to avoid any losses that might occur from lyophilized material adhering to the cap or sides of the tube".
Stability	Use a manual defrost freezer and avoid repeated freeze-thaw cycles.
&Storage:	12 months from date of receipt, -20 to -70°C as supplied. 6 months, -20 to -70°C under sterile conditions after reconstitution. 1 month, 2 to 8°C under sterile conditions after reconstitution.
Shipping:	The product is shipped at 4°C. Upon receipt, store it immediately at the temperature recommended above.

Application Information

Recommended Dilution:	Western Blot (1:1000-1:2000) Note: Optimal dilutions/concentrations should be determined by the end user.
Expected / apparent MW:	8 kDa
Confirmed Reactivity:	<i>Arabidopsis thaliana</i>
Predicted Reactivity:	For more species homologues information, please contact tech support at tech@phytoab.com .

Research Use Only

Application Example



Thy-WT: thylakoid membrane protein from WT of *Arabidopsis thaliana* containing 2.5 µg of chlorophyll.

Thy-PS: thylakoid membrane protein from an Arabidopsis mutant with low accumulation of PSI containing 2.5 µg of chlorophyll.

Electrophoresis: Tricine-SDS-PAGE

Transfer: blotting to NC (nitrocellulose) membrane for 1 h.

Blocking: 5% skim milk at RT or 4°C for 1 h.

Primary antibody: 1:1000 dilution overnight at 4°C.

Secondary antibody: 1:10000 dilution using Goat Anti-Rabbit IgG H&L(HRP) (Cat# PHY6000).

Detection: using chemiluminescence substrate and image were captured with CCD camera.