

Anti-GFP tag antibody

Catalog: PHY5020

Product Information

Description:	Mouse monoclonal antibody
Synonyms:	GFP tag
Immunogen:	Recombinant protein corresponding to full length GFP.
Form:	Lyophilized
Quantity:	150 µg
Purification:	Protein A purified
Reconstitution:	Reconstitution with 150 µl of 0.01M sterile PBS. "Note: please spin tube briefly prior to opening it to avoid any losses that might occur from lyophilized material adhering to the cap or sides of the tube".
Stability &	Use a manual defrost freezer and avoid repeated freeze-thaw cycles.
Storage:	12 months from date of receipt, -20 to -70°C as supplied. 6 months, -20 to -70°C under sterile conditions after reconstitution. 1 month, 2 to 8°C under sterile conditions after reconstitution.
Shipping:	The product is shipped at 4°C. Upon receipt, store it immediately at the temperature recommended above.

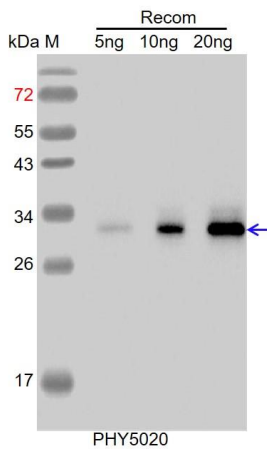
Application Information

Recommended Dilution:	Western Blot (1:1000-1:2000), IF, ELISA Note: Optimal dilutions/concentrations should be determined by the end user.
Confirmed Reactivity:	Anti-GFP tag recognizes GFP and GFP-tagged fusion proteins.

Research Use Only

Application Example

Example 1



Recom: 5 ng, 10 ng and 20 ng GFP-tagged fusion protein, respectively and having a molecular mass of 32 kDa.

Electrophoresis: 15% SDS-PAGE

Transfer: blotting to NC (nitrocellulose) membrane for 1 h.

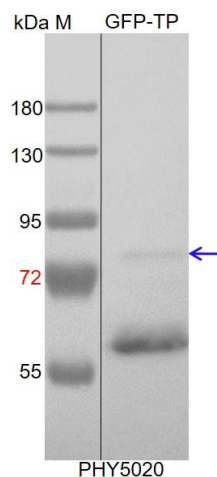
Blocking: 5% skim milk at RT or 4°C for 1 h.

Primary antibody: 1:1000 dilution overnight at 4°C.

Secondary antibody: 1:5000 dilution using Goat Anti-Mouse IgGH&L (HRP) (Cat# PHY6006).

Detection: using chemiluminescence substrate and image were captured with CCD camera.

Example 2



GFP-TP: 30 µg total protein from transgenic *Arabidopsis thaliana*, containing GFP-tagged fusion protein.

Electrophoresis: 10% SDS-PAGE

Transfer: blotting to NC (nitrocellulose) membrane for 1h.

Blocking: 5% skim milk at RT or 4°C for 1h.

Primary antibody: 1:1000 dilution overnight at 4°C.

Secondary antibody: 1:5000 dilution using Goat Anti-Mouse IgGH&L (HRP) (Cat# PHY6006).

Detection: using chemiluminescence substrate and image were captured with CCD camera.