

# Anti-Transmembrane protein, putative antibody

Catalog: PHY0679S

## Product Information

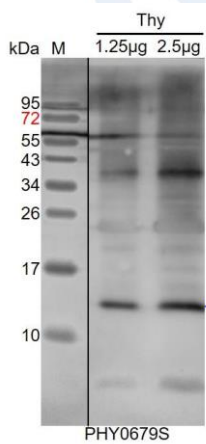
<b>Description:</b>	Rabbit polyclonal antibody
<b>Background:</b>	RIQ proteins contribute to NPQ and grana stacking in ways different from those of CURT1 functions, they may directly regulate the extent of grana stacking and, consequently, the optimization of the LHCII organization. RIQ proteins contain RIQ1 (AT5G08050) and RIQ2 (AT1G74730).
<b>Synonyms:</b>	RIQ2
<b>Immunogen:</b>	Recombinant protein of RIQ2 (45-198aa) derived from <i>Arabidopsis thaliana</i> AT1G74730.
<b>Form:</b>	Lyophilized
<b>Quantity:</b>	150 µg
<b>Purification:</b>	Serum
<b>Reconstitution:</b>	Reconstitution with 150µl of sterile water. "Note: please spin tube briefly prior to opening it to avoid any losses that might occur from lyophilized material adhering to the cap or sides of the tube".
<b>Stability &amp; Storage:</b>	Use a manual defrost freezer and avoid repeated freeze-thaw cycles. 12 months from date of receipt, -20 to -70°C as supplied. 6 months, -20 to -70°C under sterile conditions after reconstitution. 1 month, 2 to 8°C under sterile conditions after reconstitution.
<b>Shipping:</b>	The product is shipped at 4°C. Upon receipt, store it immediately at the temperature recommended above.

## Application Information

<b>Recommended Dilution:</b>	Western Blot (1:1000-1:2000) Note: Optimal dilutions/concentrations should be determined by the end user.
<b>Expected / apparent MW:</b>	21 kDa
<b>Confirmed Reactivity:</b>	<i>Arabidopsis thaliana</i>
<b>Predicted Reactivity:</b>	For more species homologues information, please contact tech support at <a href="mailto:tech@phytoab.com">tech@phytoab.com</a> .

Research Use Only

## Application Example



Thy: thylakoid membrane protein from *Arabidopsis thaliana* containing 1.25 µg and 2.5 µg of chlorophyll, respectively.

**Electrophoresis:** 15% SDS-PAGE

**Transfer:** blotting to NC (nitrocellulose) membrane for 1 h.

**Blocking:** 5% skim milk at RT or 4°C for 1 h.

**Primary antibody:** 1:1000 dilution overnight at 4°C.

**Secondary antibody:** 1:10000 dilution using Goat Anti-Rabbit IgG H&L(HRP) (Cat# PHY6000).

**Detection:** using chemiluminescence substrate and image were captured with CCD camera.