

Anti-Peptide methionine sulfoxide reductase B1, chloroplastic antibody

Catalog: PHY0916S

Product Information

Description:	Rabbit polyclonal antibody
Background:	Methionine sulfoxide reductase B1 (MSRB1) catalytically reduces the R-enantiomer of MetSO. The other role is in the tolerance to oxidative damage. In Arabidopsis, there are two chloroplastic MsrB proteins, MsrB1 (AT1G53670) and MsrB2 (AT4G25330).
Synonyms:	MsrB1, ATMSRB1, METHIONINE SULFOXIDE REDUCTASE B 1.
Immunogen:	KLH-conjugated synthetic peptide (15 aa from central section) derived from <i>Arabidopsis thaliana</i> MsrB1 (AT1G53670).
Form:	Lyophilized
Quantity:	150 µg
Purification:	Serum Peptide affinity form antibody available upon request at info@phytoab.com .
Reconstitution:	Reconstitution with 150 µl of sterile water. "Note: please spin tube briefly prior to opening it to avoid any losses that might occur from lyophilized material adhering to the cap or sides of the tube".
Stability & Storage:	Use a manual defrost freezer and avoid repeated freeze-thaw cycles. 12 months from date of receipt, -20 to -70°C as supplied. 6 months, -20 to -70°C under sterile conditions after reconstitution. 1 month, 2 to 8°C under sterile conditions after reconstitution.
Shipping:	The product is shipped at 4°C. Upon receipt, store it immediately at the temperature recommended above.

Application Information

Recommended Dilution:	Western Blot (1:1000-1:2000) Note: Optimal dilutions/concentrations should be determined by the end user.
Expected / apparent MW:	23 / 16 kDa
Confirmed Reactivity:	<i>Arabidopsis thaliana</i>

Research Use Only

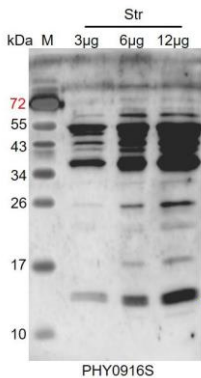
Predicted Reactivity:

Among species analyzed, the sequence of the synthetic peptide used for immunization is 100% homologues with the sequence in *Solanum tuberosum*, *Vitis vinifera*, *Nicotiana tabacum*, *Oryza sativa*, *Brassica napus*, *Brassica rapa*, *Cucumis sativus*, *Glycine max*, *Gossypium raimondii*, *Solanum lycopersicum*, 80-99% homologues with the sequence in *Panicum virgatum*, *Zea mays*, *Sorghum bicolor*, *Setaria viridis*, *Hordeum vulgare subsp. vulgare*, *Triticum aestivum*, *Populus trichocarpa*, *Medicago truncatula*, *Spinacia oleracea*.

For more species homologues information, please contact tech support at tech@phytoab.com.

Application Example

Str: 3 μ g, 6 μ g, and 12 μ g stromal protein from *Arabidopsis thaliana*, respectively.



Electrophoresis: 15% SDS-PAGE

Transfer: blotting to NC (nitrocellulose) membrane for 1 h.

Blocking: 5% skim milk at RT or 4°C for 1 h.

Primary antibody: 1:1000 dilution overnight at 4°C.

Secondary antibody: 1:10000 dilution using Goat Anti-Rabbit IgG

H&L(HRP) (Cat# PHY6000).

Detection: using chemiluminescence substrate and image were captured with CCD camera.