

Anti-Nitrogen regulatory protein P-II homolog antibody

Catalog: PHY2730A

Product Information

Description:	Rabbit polyclonal antibody
Background:	PII protein may function as part of a signal transduction network involved in perceiving the status of carbon and organic nitrogen. It forms a protein complex with N-acetylglutamate kinase and regulates the kinase activity by relieving the feedback inhibition of the kinase by arginine.
Synonyms:	GLB1, GLNB1 HOMOLOG, PII
Immunogen:	KLH-conjugated synthetic peptide (16 aa from Central section) derived from <i>Arabidopsis thaliana</i> GLB1 (AT4G01900).
Form:	Lyophilized
Quantity:	150 µg
Purification:	Immunogen affinity purified
Reconstitution:	Reconstitution with 150 µl of 0.01 M sterile PBS. "Note: please spin tube briefly prior to opening it to avoid any losses that might occur from lyophilized material adhering to the cap or sides of the tube".
Stability & Storage:	Use a manual defrost freezer and avoid repeated freeze-thaw cycles. 12 months from date of receipt, -20 to -70°C as supplied. 6 months, -20 to -70°C under sterile conditions after reconstitution. 1 month, 2 to 8°C under sterile conditions after reconstitution.
Shipping:	The product is shipped at 4°C. Upon receipt, store it immediately at the temperature recommended above.

Application Information

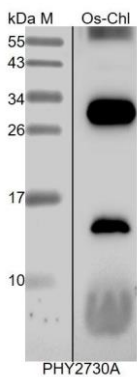
Recommended Dilution:	Western Blot (1:1000-1:2000) Note: Optimal dilutions/concentrations should be determined by the end user.
Expected / apparent MW:	21 / 15 kDa
Confirmed Reactivity:	<i>Oryza sativa</i>
Predicted Reactivity:	Among species analyzed, the sequence of the synthetic peptide used for immunization is 100% homologous with the sequence in <i>Brassica</i>

Research Use Only

napus, *Vitis vinifera*, *Glycine max*, *Panicum virgatum*, *Setaria viridis*, *Sorghum bicolor*, *Populus trichocarpa*, *Brassica rapa*, and 80-99% homologues with the sequence in *Physcomitrium patens*, *Solanum lycopersicum*, *Spinacia oleracea*, *Nicotiana tabacum*, *Solanum tuberosum*, *Triticum aestivum*, *Cucumis sativus*, *Hordeum vulgare*, *Medicago truncatula*.

For more species homologues information, please contact tech support at tech@phytoab.com.

Application Example



Os-Chl: 5 μ l total chloroplast protein from *Oryza sativa*.

Electrophoresis: 15% SDS-PAGE

Transfer: blotting to NC (nitrocellulose) membrane for 1 h.

Blocking: 5% skim milk at RT or 4°C for 1 h.

Primary antibody: 1:2000 dilution overnight at 4°C.

Secondary antibody: 1:10000 dilution using Goat Anti-Rabbit IgG H&L(HRP) (Cat# PHY6000).

Detection: using chemiluminescence substrate and image were captured with CCD camera.