

Anti-Mitochondrial uncoupling protein 1, C-terminal antibody

Catalog: PHY1574A

Product Information

Description:	Rabbit polyclonal antibody
Background:	In plants, members of the UCP family have been associated with several physiological roles, including thermogenesis regulation, abiotic stress responses and climacteric increases in respiration. And some researches show that AtUCP1 responses to abiotic stresses.
Synonyms:	UCP1, ARABIDOPSIS THALIANA PLANT UNCOUPLING MITOCHONDRIAL PROTEIN 1, ARABIDOPSIS THALIANA UNCOUPLING PROTEIN 1, ATPUMP1, ATUCP1, PLANT UNCOUPLING MITOCHONDRIAL PROTEIN 1, PUMP1, UCP, UNCOUPLING PROTEIN 1
Immunogen:	KLH-conjugated synthetic peptide (15 aa from C terminal section) derived from <i>Arabidopsis thaliana</i> UCP1 (AT3G54110).
Form:	Lyophilized
Quantity:	150 µg
Purification:	Immunogen affinity purified
Reconstitution:	Reconstitution with 150 µl of 0.01 M sterile PBS. "Note: please spin tube briefly prior to opening it to avoid any losses that might occur from lyophilized material adhering to the cap or sides of the tube".
Stability & Storage:	Use a manual defrost freezer and avoid repeated freeze-thaw cycles. 12 months from date of receipt, -20 to -70°C as supplied. 6 months, -20 to -70°C under sterile conditions after reconstitution. 1 month, 2 to 8°C under sterile conditions after reconstitution.
Shipping:	The product is shipped at 4°C. Upon receipt, store it immediately at the temperature recommended above.

Application Information

Recommended Dilution:	Western Blot (1:1000-1:2000) Note: Optimal dilutions/concentrations should be determined by the end user.
Expected / apparent MW:	33 / 27 kDa

Research Use Only

Confirmed Reactivity:

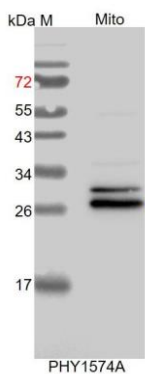
Arabidopsis thaliana

Predicted Reactivity:

Among species analyzed, the sequence of the synthetic peptide used for immunization is 80-99% homologues with the sequence in *Brassica rapa*.

For more species homologues information, please contact tech support at tech@phytoab.com.

Application Example



Mito: 10 µg mitochondria protein from *Arabidopsis thaliana*.

Electrophoresis: 15% SDS-PAGE

Transfer: blotting to NC (nitrocellulose) membrane for 1 h.

Blocking: 5% skim milk at RT or 4°C for 1 h.

Primary antibody: 1:1000 dilution overnight at 4°C.

Secondary antibody: 1:10000 dilution using Goat Anti-Rabbit IgG H&L(HRP) (Cat# PHY6000).

Detection: using chemiluminescence substrate and image were captured with CCD camera.