

Anti-Replication protein A 70 kDa DNA-binding subunit A antibody

Catalog: PHY1813S

Product Information

Description:	Rabbit polyclonal antibody
Background:	RPA1A is a homolog of Replication Protein A that is involved in meiosis I in pollen mother cells. It is located in chromatin-associated foci in early leptotene and can be detected in these foci until late pachytene of meiosis I.
Synonyms:	RPA1A, ARABIDOPSIS THALIANA REPLICATION PROTEIN A 1A, ARABIDOPSIS THALIANA RPA70-KDA SUBUNIT A, ATRPA1A, ATRPA70A, REPLICATION PROTEIN A 1A, RPA70-KDA SUBUNIT A, RPA70A
Immunogen:	KLH-conjugated synthetic peptide (20 aa from N terminal section) derived from <i>Arabidopsis thaliana</i> RPA1A (AT2G06510).
Form:	Lyophilized
Quantity:	150 µg
Purification:	Serum Peptide affinity form antibody available upon request at info@phytoab.com .
Reconstitution:	Reconstitution with 150 µl of sterile water. "Note: please spin tube briefly prior to opening it to avoid any losses that might occur from lyophilized material adhering to the cap or sides of the tube".
Stability &	Use a manual defrost freezer and avoid repeated freeze-thaw cycles.
Storage:	12 months from date of receipt, -20 to -70°C as supplied. 6 months, -20 to -70°C under sterile conditions after reconstitution. 1 month, 2 to 8°C under sterile conditions after reconstitution.
Shipping:	The product is shipped at 4°C. Upon receipt, store it immediately at the temperature recommended above.

Application Information

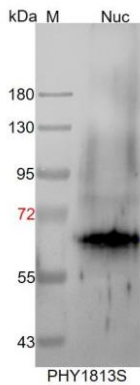
Recommended Dilution:	Western Blot (1:1000-1:2000) Note: Optimal dilutions/concentrations should be determined by the end user.
Expected / apparent MW:	72 / 69 kDa

Research Use Only

Confirmed Reactivity: *Arabidopsis thaliana*

Predicted Reactivity: For more species homologues information, please contact tech support at tech@phytoab.com.

Application Example



Nuc: 4 µg nuclear protein from *Arabidopsis thaliana*.

Electrophoresis: 10% SDS-PAGE

Transfer: blotting to NC (nitrocellulose) membrane for 1 h.

Blocking: 5% skim milk at RT or 4°C for 1 h.

Primary antibody: 1:1000 dilution overnight at 4°C.

Secondary antibody: 1:10000 dilution using Goat Anti-Rabbit IgG H&L(HRP) (Cat# PHY6000).

Detection: using chemiluminescence substrate and image were captured with CCD camera.