

Anti-Nitrogen regulatory protein P-II homolog antibody

Catalog: PHY2731A

Product Information

Description:	Rabbit polyclonal antibody
Background:	PII protein may function as part of a signal transduction network involved in perceiving the status of carbon and organic nitrogen. It forms a protein complex with N-acetylglutamate kinase and regulates the kinase activity by relieving the feedback inhibition of the kinase by arginine.
Synonyms:	GLB1, GLNB1 HOMOLOG, PII
Immunogen:	KLH-conjugated synthetic peptide (15 aa from C terminal section) derived from <i>Arabidopsis thaliana</i> GLB1 (AT4G01900).
Form:	Lyophilized
Quantity:	150 µg
Purification:	Immunogen affinity purified
Reconstitution:	Reconstitution with 150 µl of 0.01M sterile PBS. "Note: please spin tube briefly prior to opening it to avoid any losses that might occur from lyophilized material adhering to the cap or sides of the tube".
Stability & Storage:	Use a manual defrost freezer and avoid repeated freeze-thaw cycles. 12 months from date of receipt, -20 to -70°C as supplied. 6 months, -20 to -70°C under sterile conditions after reconstitution. 1 month, 2 to 8°C under sterile conditions after reconstitution.
Shipping:	The product is shipped at 4°C. Upon receipt, store it immediately at the temperature recommended above.

Application Information

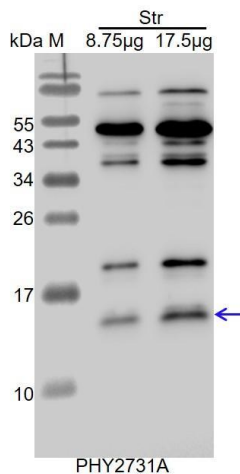
Recommended Dilution:	Western Blot (1:1000-1:2000) Note: Optimal dilutions/concentrations should be determined by the end user.
Expected / apparent MW:	21 / 15 kDa
Confirmed Reactivity:	<i>Arabidopsis thaliana</i>
Predicted Reactivity:	Among species analyzed, the sequence of the synthetic peptide used for immunization is 80-99% homologues with the sequence in

Research Use Only

Brassica napus, Brassica rapa, Hordeum vulgare, Glycine max, Cucumis sativus, Nicotiana tabacum, Solanum tuberosum, Solanum lycopersicum, Oryza sativa, Panicum virgatum, Triticum aestivum, Vitis vinifera, Physcomitrium patens, Medicago truncatula, Spinacia oleracea, Synechococcus elongatus PCC 7942, Synechocystis sp. PCC 6803, Gossypium raimondii, Populus trichocarpa, Setaria viridis, Sorghum bicolor.

For more species homologues information, please contact tech support at tech@phytoab.com.

Application Example



Str: 8.75 µg and 17.5 µg stromal protein from *Arabidopsis thaliana*.

Electrophoresis: 15% SDS-PAGE

Transfer: blotting to NC (nitrocellulose) membrane for 1 h.

Blocking: 5% skim milk at RT or 4°C for 1 h.

Primary antibody: 1:2000 dilution overnight at 4°C.

Secondary antibody: 1:10000 dilution using Goat Anti-Rabbit IgG H&L(HRP) (Cat# PHY6000).

Detection: using chemiluminescence substrate and image were captured with CCD camera.