

# Anti-Ethylene receptor 1 antibody

Catalog: PHY1702S

## Product Information

<b>Description:</b>	Rabbit polyclonal antibody
<b>Background:</b>	Ethylene is a gaseous plant hormone perceived by a family of receptors in Arabidopsis including ETHYLENE RESPONSE1 (ETR1) (AT1G66340) and ETR2 (AT3G23150). Ethylene is perceived by membrane-bound ethylene receptors, and among the homologous receptors in Arabidopsis, the ETR1 ethylene receptor plays a major role.
<b>Synonyms:</b>	ETR1, ATETR1, EIN1, ETHYLENE INSENSITIVE 1, ETHYLENE RESPONSE, ETHYLENE RESPONSE 1, ETR
<b>Immunogen:</b>	Recombinant protein (165-400 aa) derived from <i>Arabidopsis thaliana</i> ETR1 (AT1G66340).
<b>Form:</b>	Lyophilized
<b>Quantity:</b>	150 µg
<b>Purification:</b>	Serum
<b>Reconstitution:</b>	Reconstitution with 150 µl of sterile water. "Note: please spin tube briefly prior to opening it to avoid any losses that might occur from lyophilized material adhering to the cap or sides of the tube".
<b>Stability &amp; Storage:</b>	Use a manual defrost freezer and avoid repeated freeze-thaw cycles. 12 months from date of receipt, -20 to -70°C as supplied. 6 months, -20 to -70°C under sterile conditions after reconstitution. 1 month, 2 to 8°C under sterile conditions after reconstitution.
<b>Shipping:</b>	The product is shipped at 4°C. Upon receipt, store it immediately at the temperature recommended above.

## Application Information

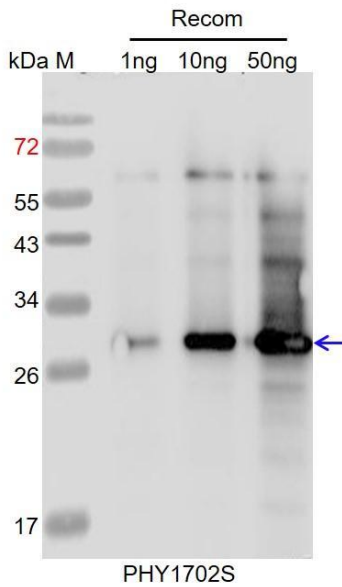
<b>Recommended Dilution:</b>	Western Blot (1:1000-1:2000) Note: Optimal dilutions/concentrations should be determined by the end user.
<b>Expected / apparent MW:</b>	83 kDa
<b>Confirmed Reactivity:</b>	<i>Arabidopsis thaliana</i>

Research Use Only

**Predicted Reactivity:**

For more species homologues information, please contact tech support at [tech@phytoab.com](mailto:tech@phytoab.com).

**Application Example**



Recom: 1 ng, 10 ng and 50 ng recombinant protein containing the peptide for immunization and having a molecular mass of 27 kDa.

**Electrophoresis:** 15% SDS-PAGE

**Transfer:** blotting to NC (nitrocellulose) membrane for 1 h.

**Blocking:** 5% skim milk at RT or 4°C for 1 h.

**Primary antibody:** 1:1000 dilution overnight at 4°C.

**Secondary antibody:** 1:10000 dilution using Goat Anti-Rabbit IgG H&L (HRP) (Cat# PHY6000).

**Detection:** using chemiluminescence substrate and image were captured with CCD camera.