

# Anti-PsbS protein antibody

Catalog: PHY0345

## Product Information

<b>Description:</b>	Rabbit polyclonal antibody
<b>Background:</b>	PsbS is a ubiquitous pigment-binding protein associated with photosystem II (PSII) of higher plants, which is involved in nonphotochemical quenching rather than in photosynthesis. Mutant has a normal violaxanthin cycle but has a limited capacity of quenching singlet excited chlorophylls and is tolerant to lipid peroxidation.
<b>Synonyms:</b>	PsbS, 22 kDa Lhc-like PSII protein
<b>Immunogen:</b>	KLH-conjugated synthetic peptide (13 aa from central section) derived of PsbS from <i>Arabidopsis thaliana</i> PsbS (AT1G44575).
<b>Form:</b>	Lyophilized
<b>Quantity:</b>	150 µg
<b>Purification:</b>	Protein A purified
<b>Reconstitution:</b>	Reconstitution with 150 µl of 0.01 M sterile PBS. "Note: please spin tube briefly prior to opening it to avoid any losses that might occur from lyophilized material adhering to the cap or sides of the tube".
<b>Stability &amp; Storage:</b>	Use a manual defrost freezer and avoid repeated freeze-thaw cycles. 12 months from date of receipt, -20 to -70°C as supplied. 6 months, -20 to -70°C under sterile conditions after reconstitution. 1 month, 2 to 8°C under sterile conditions after reconstitution.
<b>Shipping:</b>	The product is shipped at 4°C. Upon receipt, store it immediately at the temperature recommended above.

## Application Information

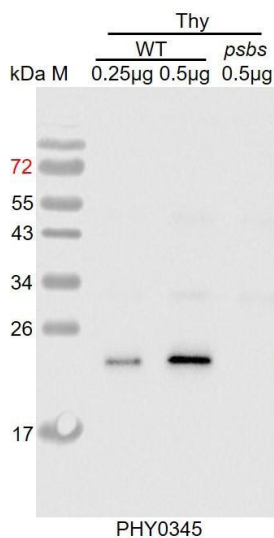
<b>Recommended Dilution:</b>	Western Blot (1:1000-1:2000) Note: Optimal dilutions/concentrations should be determined by the end user.
<b>Expected / apparent MW:</b>	28 / 24 kDa
<b>Confirmed Reactivity:</b>	<i>Arabidopsis thaliana</i>
<b>Predicted Reactivity:</b>	Among species analyzed, the sequence of the synthetic peptide used

Research Use Only

for immunization is 100% homologues with the sequence in *Brassica napus*, *Brassica rapa*, and 80-99% homologues with the sequence in *Gossypium raimondii*, *Solanum lycopersicum*, *Vitis vinifera*, *Glycine max*, *Populus trichocarpa*, *Medicago truncatula*.

For more species homologues information, please contact tech support at [tech@phytoab.com](mailto:tech@phytoab.com).

## Application Example



Thy-WT: thylakoid membrane protein from *Arabidopsis thaliana* containing 0.25 µg, 0.5 µg of chlorophyll, respectively.

Thy-*psbs*: thylakoid membrane protein from a *psbs* mutant of *Arabidopsis thaliana* containing 0.5 µg of chlorophyll.

**Electrophoresis:** 15% SDS-PAGE

**Transfer:** blotting to NC (nitrocellulose) membrane for 1 h.

**Blocking:** 5% skim milk at RT or 4°C for 1 h.

**Primary antibody:** 1:1000 dilution overnight at 4°C.

**Secondary antibody:** 1:10000 dilution using Goat Anti-Rabbit IgG H&L(HRP) (Cat# PHY6000).

**Detection:** using chemiluminescence substrate and image were captured with CCD camera.