

Anti-Mitogen-activated protein kinase 6, N-terminal antibody

Catalog: PHY0714A

Product Information

Description:	Rabbit polyclonal antibody
Background:	In <i>Arabidopsis</i> , MPK3 (AT3G45640), MPK4 (AT4G01370), and MPK6 (AT2G43790) are the best characterized members of the MAPK family and have also been demonstrated to be part of the ABA signal transduction pathway. MPK6 is induced by pathogens, ethylene biosynthesis, oxidative stress and osmotic stress. Also is involved in ovule development.
Synonyms:	MPK6, ATMAPK6, ATMPK6, MAP KINASE 6, MAPK6
Immunogen:	KLH-conjugated synthetic peptide (15 aa from N terminal section) derived from <i>Arabidopsis thaliana</i> MPK6 (AT2G43790).
Form:	Lyophilized
Quantity:	150 µg
Purification:	Immunogen affinity purified
Reconstitution:	Reconstitution with 150 µl of 0.01 M sterile PBS. "Note: please spin tube briefly prior to opening it to avoid any losses that might occur from lyophilized material adhering to the cap or sides of the tube".
Stability & Storage:	Use a manual defrost freezer and avoid repeated freeze-thaw cycles. 12 months from date of receipt, -20 to -70°C as supplied. 6 months, -20 to -70°C under sterile conditions after reconstitution. 1 month, 2 to 8°C under sterile conditions after reconstitution.
Shipping:	The product is shipped at 4°C. Upon receipt, store it immediately at the temperature recommended above.

Application Information

Recommended Dilution:	Western Blot (1:1000-1:2000) Note: Optimal dilutions/concentrations should be determined by the end user.
Expected / apparent MW:	41 / 44 kDa
Confirmed Reactivity:	<i>Arabidopsis thaliana</i>

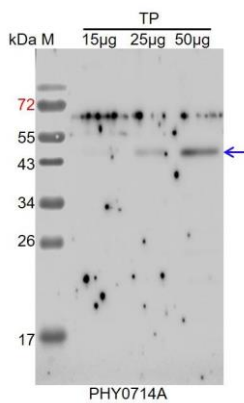
Research Use Only

Predicted Reactivity:

Among species analyzed, the sequence of the synthetic peptide used for immunization is 100% homologues with the sequence in *Brassica napus*, *Brassica rapa*, *Sorghum bicolor*, *Zea mays*.

For more species homologues information, please contact tech support at tech@phytoab.com.

Application Example



TP: 15 µg, 25 µg and 50 µg, total protein from *Arabidopsis thaliana*.

Electrophoresis: 15% SDS-PAGE

Transfer: blotting to NC (nitrocellulose) membrane for 1 h.

Blocking: 5% skim milk at RT or 4°C for 1 h.

Primary antibody: 1:1000 dilution overnight at 4°C.

Secondary antibody: 1:10000 dilution using Goat Anti-Rabbit IgG H&L(HRP) (Cat# PHY6000).

Detection: using chemiluminescence substrate and image were captured with CCD camera.