

Anti-40S ribosomal protein S6-1,N-terminal antibody

Catalog: PHY2025A

Product Information

Description:	Rabbit polyclonal antibody
Background:	RPS6A and RPS6B (AT5G10360) are fully redundant and essential during gametogenesis. It may play an important role in controlling cell growth and proliferation through the selective translation of particular classes of mRNA.
Synonyms:	RPS6A, ATRPS6, RIBOSOMAL PROTEIN S6, RPS6
Immunogen:	KLH-conjugated synthetic peptide (16 aa from N terminal section) derived from <i>Arabidopsis thaliana</i> RPS6 (AT4G31700).
Form:	Lyophilized
Quantity:	150 µg
Purification:	Immunogen affinity purified
Reconstitution:	Reconstitution with 150 µl of 0.01 M sterile PBS. "Note: please spin tube briefly prior to opening it to avoid any losses that might occur from lyophilized material adhering to the cap or sides of the tube".
Stability & Storage:	Use a manual defrost freezer and avoid repeated freeze-thaw cycles. 12 months from date of receipt, -20 to -70°C as supplied. 6 months, -20 to -70°C under sterile conditions after reconstitution. 1 month, 2 to 8°C under sterile conditions after reconstitution.
Shipping:	The product is shipped at 4°C. Upon receipt, store it immediately at the temperature recommended above.

Application Information

Recommended Dilution:	Western Blot (1:1000-1:2000) Note: Optimal dilutions/concentrations should be determined by the end user.
Expected / apparent MW:	28 / 30 kDa
Confirmed Reactivity:	<i>Arabidopsis thaliana</i>
Predicted Reactivity:	Among species analyzed, the sequence of the synthetic peptide used for immunization is 100% homologues with the sequence in <i>Setaria viridis</i> , <i>Sorghum bicolor</i> , <i>Oryza sativa Indica Group</i> , <i>Oryza sativa Japonica Group</i> , <i>Gossypium raimondii</i> , <i>Solanum tuberosum</i> , <i>Vitis</i>

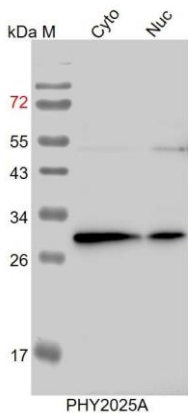
Research Use Only

vinifera, *Populus trichocarpa*, *Solanum lycopersicum*, *Glycine max*, *Triticum aestivum*, *Panicum virgatum*, and 80-99% homologues with the sequence in *Spinacia oleracea*, *Cucumis sativus*, *Nicotiana tabacum*, *Medicago truncatula*, *Zea mays*, *Brassica napus*, *Brassica rapa*.

The sequence of the synthetic peptide used for immunization is 94% (15/16) homologues with the sequence in RPS6B (AT5G10360).

For more species homologues information, please contact tech support at tech@phytoab.com.

Application Example



Cyto: 12.5 µg cytosolic protein from *Arabidopsis thaliana*.

Nuc: 5 µg nuclear protein from *Arabidopsis thaliana*.

Electrophoresis: 15% SDS-PAGE

Transfer: blotting to NC (nitrocellulose) membrane for 1 h.

Blocking: 5% skim milk at RT or 4°C for 1 h.

Primary antibody: 1:1000 dilution overnight at 4°C.

Secondary antibody: 1:10000 dilution using Goat Anti-Rabbit IgG H&L(HRP) (Cat# PHY6000).

Detection: using chemiluminescence substrate and image were captured with CCD camera.