

# Anti-CFoll subunits of chloroplast ATP synthase antibody

Catalog: PHY0170S

## Product Information

<b>Description:</b>	Rabbit polyclonal antibody
<b>Background:</b>	ATP synthase produces ATP from ADP in the presence of a proton gradient across the membrane. F-type ATPases have two components, CF(1) - the catalytic core - and CF(0) - the membrane proton channel. CF(1) has five subunits: alpha(3), beta(3), gamma(1), delta(1), epsilon(1). CF(0) has three main subunits: a, b and c.
<b>Synonyms:</b>	AtpG, ATPase subunit II, ATP synthase F(0) sector subunit b'
<b>Immunogen:</b>	KLH-conjugated synthetic peptide (14 aa from N terminal section) derived from <i>Arabidopsis thaliana</i> AtpG (AT4G32260).
<b>Form:</b>	Lyophilized
<b>Quantity:</b>	150 µg
<b>Purification:</b>	Serum Peptide affinity form antibody available upon request at <a href="mailto:info@phytoab.com">info@phytoab.com</a> .
<b>Reconstitution:</b>	Reconstitution with 150 µl of sterile water. "Note: please spin tube briefly prior to opening it to avoid any losses that might occur from lyophilized material adhering to the cap or sides of the tube".
<b>Stability &amp;</b>	Use a manual defrost freezer and avoid repeated freeze-thaw cycles.
<b>Storage:</b>	12 months from date of receipt, -20 to -70°C as supplied. 6 months, -20 to -70°C under sterile conditions after reconstitution. 1 month, 2 to 8°C under sterile conditions after reconstitution.
<b>Shipping:</b>	The product is shipped at 4°C. Upon receipt, store it immediately at the temperature recommended above.

## Application Information

<b>Recommended Dilution:</b>	Western Blot (1:1000-1:2000) Note: Optimal dilutions/concentrations should be determined by the end user.
<b>Expected / apparent MW:</b>	24 / 16 kDa

Research Use Only

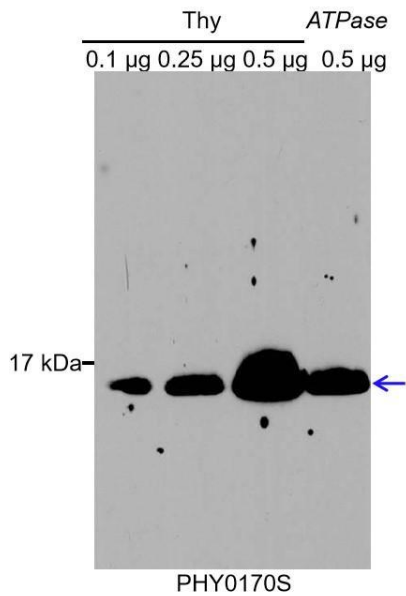
**Confirmed Reactivity:**

*Arabidopsis thaliana*

**Predicted Reactivity:**

For more species homologues information, please contact tech support at [tech@phytoab.com](mailto:tech@phytoab.com).

## Application Example



**Thy:** thylakoid membrane protein from WT of *Arabidopsis thaliana* leaf containing 0.1 µg, 0.25 µg and 0.5 µg of chlorophyll, respectively.

**ATPase:** thylakoid membrane protein from Arabidopsis mutant with low accumulation of ATPase containing 0.5 µg of chlorophyll.

**Electrophoresis:** 15% SDS-PAGE

**Transfer:** blotting to NC (nitrocellulose) membrane for 1 h.

**Blocking:** 5% skim milk at RT or 4°C for 1 h.

**Primary antibody:** 1:1000 dilution overnight at 4°C.

**Secondary antibody:** 1:10000 dilution using Goat Anti-Rabbit IgG H&L(HRP) (Cat# PHY6000).

**Detection:** using chemiluminescence substrate and image were captured with CCD camera.