

Anti-Chlorophyllide a oxygenase, chloroplastic antibody

Catalog: PHY1909S

Product Information

Description:	Rabbit polyclonal antibody
Background:	CAO is chlorophyllide a oxygenase which converts chlorophyllide a to chlorophyllide b by catalyzing two successive hydroxylations at the 7-methyl group of chlorophyllide a. CAO is the key enzyme in chlorophyllide b biosynthesis. CAO was shown through cross-linking experiments to interact with Toc75 (AT3G46740), Toc34 (AT5G05000), Tic40 (AT5G16620), Tic20 (AT1G04940) and Tic22 (AT4G33350).
Synonyms:	CAO, ARABIDOPSIS THALIANA CHLOROPHYLL A OXYGENASE, ATCAO, CH1, CHLORINA 1, CHLOROPHYLL A OXYGENASE
Immunogen:	Recombinant protein (45-301 aa) derived from <i>Arabidopsis thaliana</i> CAO (AT1G44446).
Form:	Lyophilized
Quantity:	150 µg
Purification:	Serum
Reconstitution:	Reconstitution with 150 µl of sterile water. "Note: please spin tube briefly prior to opening it to avoid any losses that might occur from lyophilized material adhering to the cap or sides of the tube".
Stability & Storage:	Use a manual defrost freezer and avoid repeated freeze-thaw cycles. 12 months from date of receipt, -20 to -70°C as supplied. 6 months, -20 to -70°C under sterile conditions after reconstitution. 1 month, 2 to 8°C under sterile conditions after reconstitution.
Shipping:	The product is shipped at 4°C. Upon receipt, store it immediately at the temperature recommended above.

Application Information

Recommended Dilution:	Western Blot (1:1000-1:2000) Note: Optimal dilutions/concentrations should be determined by the end user.
------------------------------	--

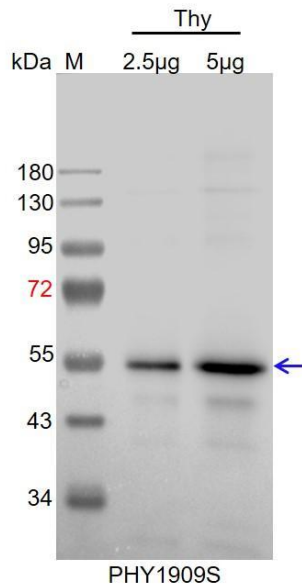
Research Use Only

Expected / apparent MW: 60 / 56 kDa

Confirmed Reactivity: *Arabidopsis thaliana*

Predicted Reactivity: For more species homologues information, please contact tech support at tech@phytoab.com.

Application Example



Thy: thylakoid membrane protein from *Arabidopsis thaliana* containing 2.5 µg and 5 µg of chlorophyll, respectively.

Electrophoresis: 12% SDS-Urea-PAGE

Transfer: blotting to NC (nitrocellulose) membrane for 1 h.

Blocking: 5% skim milk at RT or 4°C for 1 h.

Primary antibody: 1:1000 dilution overnight at 4°C.

Secondary antibody: 1:10000 dilution using Goat Anti-Rabbit IgG H&L (HRP) (Cat# PHY6000).

Detection: using chemiluminescence substrate and image were captured with CCD camera.