

# Anti-Thylakoid lumen 18.3 kDa protein antibody

Catalog: PHY1323A

## Product Information

<b>Description:</b>	Rabbit polyclonal antibody
<b>Background:</b>	The membrane protein AtTLP18.3 of <i>Arabidopsis thaliana</i> contains a domain of unknown function, DUF477; it forms a polysome with photosynthetic apparatuses in the thylakoid lumen. AtTLP18.3 has the molecular function of a novel acid phosphatase in the thylakoid lumen. DUF477 is accordingly renamed the thylakoid acid phosphatase domain.
<b>Synonyms:</b>	TLP18.3, ATTLP18.3, THYLAKOID LUMEN PROTEIN 18.3
<b>Immunogen:</b>	KLH-conjugated synthetic peptide (15 aa from C terminal section) derived from <i>Arabidopsis thaliana</i> TLP18.3 (AT1G54780).
<b>Form:</b>	Lyophilized
<b>Quantity:</b>	150 µg
<b>Purification:</b>	Immunogen affinity purified
<b>Reconstitution:</b>	Reconstitution with 150 µl of 0.01 M sterile PBS. "Note: please spin tube briefly prior to opening it to avoid any losses that might occur from lyophilized material adhering to the cap or sides of the tube".
<b>Stability &amp; Storage:</b>	Use a manual defrost freezer and avoid repeated freeze-thaw cycles. 12 months from date of receipt, -20 to -70°C as supplied. 6 months, -20 to -70°C under sterile conditions after reconstitution. 1 month, 2 to 8°C under sterile conditions after reconstitution.
<b>Shipping:</b>	The product is shipped at 4°C. Upon receipt, store it immediately at the temperature recommended above.

## Application Information

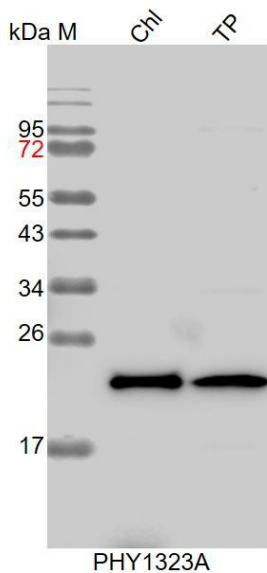
<b>Recommended Dilution:</b>	Western Blot (1:1000-1:2000) Note: Optimal dilutions/concentrations should be determined by the end user.
<b>Expected / apparent MW:</b>	31 / 22 kDa
<b>Confirmed Reactivity:</b>	<i>Arabidopsis thaliana</i>
<b>Predicted Reactivity:</b>	Among species analyzed, the sequence of the synthetic peptide used

Research Use Only

for immunization is 80-99% homologues with the sequence in *Oryza sativa Japonica Group*, *Glycine max*, *Sorghum bicolor*, *Panicum virgatum*, *Zea mays*, *Medicago truncatula*, *Setaria viridis*, *Brassica rapa*, *Brassica napus*, *Panicum virgatum*, *Hordeum vulgare*, *Cucumis sativus*, *Vitis vinifera*, *Populus trichocarpa*, *Triticum aestivum*, *Spinacia oleracea*, *Nicotiana tabacum*, *Solanum tuberosum*, *Solanum lycopersicum*.

For more species homologues information, please contact tech support at [tech@phytoab.com](mailto:tech@phytoab.com).

## Application Example



Chl: 7.5  $\mu$ g total chloroplast protein from *Arabidopsis thaliana*.

TP: 15  $\mu$ g total protein from *Arabidopsis thaliana*

**Electrophoresis:** 12% SDS-PAGE

**Transfer:** blotting to NC (nitrocellulose) membrane for 1 h.

**Blocking:** 5% skim milk at RT or 4°C for 1 h.

**Primary antibody:** 1:2000 dilution overnight at 4°C.

**Secondary antibody:** 1:10000 dilution using Goat Anti-Rabbit IgG H&L (HRP) (Cat# PHY6000).

**Detection:** using chemiluminescence substrate and image were captured with CCD camera.