

Anti-Catalase 2 antibody

Catalog: PHY3044A

Product Information

Description:	Rabbit polyclonal antibody
Background:	Catalase is a tetrameric iron porphyrin that catalyses the dismutation of H ₂ O ₂ to water and oxygen. The <i>Arabidopsis</i> genome encodes three catalase subunits, CAT1 (AT1G20630), CAT2 (AT4G35090), and CAT3 (AT1G20620). These three individual subunits associate to form at least six catalase isoforms.
Synonyms:	Cat 2, CATALASE 2, CAT2, Catalase-2
Immunogen:	KLH-conjugated synthetic peptide (20 aa from Central section) derived from <i>Arabidopsis thaliana</i> Cat 2 (AT4G35090).
Form:	Lyophilized
Quantity:	150 µg
Purification:	Immunogen affinity purified
Reconstitution:	Reconstitution with 150 µl of 0.01 M sterile PBS. "Note: please spin tube briefly prior to opening it to avoid any losses that might occur from lyophilized material adhering to the cap or sides of the tube".
Stability & Storage:	Use a manual defrost freezer and avoid repeated freeze-thaw cycles. 12 months from date of receipt, -20 to -70°C as supplied. 6 months, -20 to -70°C under sterile conditions after reconstitution. 1 month, 2 to 8°C under sterile conditions after reconstitution.
Shipping:	The product is shipped at 4°C. Upon receipt, store it immediately at the temperature recommended above.

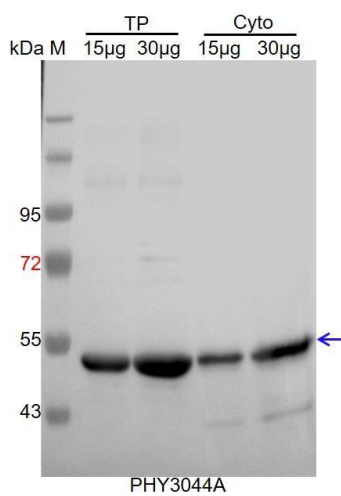
Application Information

Recommended Dilution:	Western Blot (1:1000-1:2000) Note: Optimal dilutions/concentrations should be determined by the end user.
Expected / apparent MW:	57 / 53 kDa
Confirmed Reactivity:	<i>Arabidopsis thaliana</i>
Predicted Reactivity:	Among species analyzed, the sequence of the synthetic peptide used for immunization is 100% homologous with the sequence in <i>Brassica</i>

Research Use Only

rapa, *Brassica napus*, and 80-99% homologues with the sequence in *Cucumis sativus*, *Vitis vinifera*, *Solanum lycopersicum*, *Solanum tuberosum*, *Nicotiana tabacum*, *Gossypium raimondii*, *Spinacia oleracea*, *Medicago truncatula*, *Glycine max*, *Populus trichocarpa*. For more species homologues information, please contact tech support at tech@phytoab.com.

Application Example



TP: 15 µg and 30 µg total protein from *Arabidopsis thaliana*, respectively.

Cyto: 15 µg and 30 µg cytosolic protein from *Arabidopsis thaliana*, respectively.

Electrophoresis: 12% SDS-PAGE

Transfer: blotting to NC (nitrocellulose) membrane for 1 h.

Blocking: 5% skim milk at RT or 4°C for 1 h.

Primary antibody: 1:2000 dilution overnight at 4°C.

Secondary antibody: 1:10000 dilution using Goat Anti-Rabbit IgG H&L(HRP) (Cat# PHY6000).

Detection: using chemiluminescence substrate and image were captured with CCD camera.