

Anti-4-substituted benzoates-glutamate ligase GH3.12 antibody

Catalog: PHY1542A

Product Information

Description:	Rabbit polyclonal antibody
Background:	GH3.12 (PBS3) is an enzyme capable of conjugating amino acids to 4-substituted benzoates. It is involved in both basal and induced resistance in a SA-dependent manner. It confers resistance to virulent and avirulent pathogens, and promotes SA glucosides accumulation.
Synonyms:	PBS3, ATGH3.12, AVRPPHB SUSCEPTIBLE 3, GDG1, GH3-LIKE DEFENSE GENE 1, GH3.12, GRETCHEN HAGEN 3.12, HOPW1-1-INTERACTING 3, WIN3
Immunogen:	KLH-conjugated synthetic peptide (15 aa from C terminal section) derived from <i>Arabidopsis thaliana</i> PBS3 (AT5G13320).
Form:	Lyophilized
Quantity:	150 µg
Purification:	Immunogen affinity purified
Reconstitution:	Reconstitution with 150 µl of 0.01 M sterile PBS. "Note: please spin tube briefly prior to opening it to avoid any losses that might occur from lyophilized material adhering to the cap or sides of the tube".
Stability &	Use a manual defrost freezer and avoid repeated freeze-thaw cycles.
Storage:	12 months from date of receipt, -20 to -70°C as supplied. 6 months, -20 to -70°C under sterile conditions after reconstitution. 1 month, 2 to 8°C under sterile conditions after reconstitution.
Shipping:	The product is shipped at 4°C. Upon receipt, store it immediately at the temperature recommended above.

Application Information

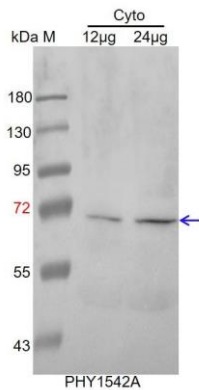
Recommended Dilution:	Western Blot (1:100-1:500) Note: Optimal dilutions/concentrations should be determined by the end user.
Expected / apparent MW:	65 / 68 kDa

Research Use Only

Confirmed Reactivity: *Arabidopsis thaliana*

Predicted Reactivity: For more species homologues information, please contact tech support at tech@phytoab.com.

Application Example



Cyto: 12 µg and 24 µg cytosolic protein from *Arabidopsis thaliana*, respectively.

Electrophoresis: 12% SDS-PAGE

Transfer: blotting to NC (nitrocellulose) membrane for 1 h.

Blocking: 5% skim milk at RT or 4°C for 1 h.

Primary antibody: 1:500 dilution overnight at 4°C.

Secondary antibody: 1:10000 dilution using Goat Anti-Rabbit IgG H&L(HRP) (Cat# PHY6000).

Detection: using chemiluminescence substrate and image were captured with CCD camera.