

# Anti-Mitochondrial uncoupling protein 1 antibody

Catalog: PHY1575A

## Product Information

|                        |  |
|------------------------|--|
| <b>Description:</b>    | Rabbit polyclonal antibody   |
| <b>Background:</b>     | In plants, members of the UCP family have been associated with several physiological roles, including thermogenesis regulation, abiotic stress responses and climacteric increases in respiration. And some researches show that AtUCP1 responses to abiotic stresses. |
| <b>Synonyms:</b>       | UCP1, ARABIDOPSIS THALIANA PLANT UNCOUPLING MITOCHONDRIAL PROTEIN 1, ARABIDOPSIS THALIANA UNCOUPLING PROTEIN 1, ATPUMP1, ATUCP1, PLANT UNCOUPLING MITOCHONDRIAL PROTEIN 1, PUMP1, UCP, UNCOUPLING PROTEIN 1  |
| <b>Immunogen:</b>      | KLH-conjugated synthetic peptide (15 aa from central section) derived from <i>Arabidopsis thaliana</i> UCP1 (AT3G54110).   |
| <b>Form:</b>           | Lyophilized  |
| <b>Quantity:</b>       | 150 µg   |
| <b>Purification:</b>   | Immunogen affinity purified  |
| <b>Reconstitution:</b> | Reconstitution with 150 µl of 0.01 M sterile PBS.<br>"Note: please spin tube briefly prior to opening it to avoid any losses that might occur from lyophilized material adhering to the cap or sides of the tube".   |
| <b>Stability &amp;</b> | Use a manual defrost freezer and avoid repeated freeze-thaw cycles.  |
| <b>Storage:</b>        | 12 months from date of receipt, -20 to -70°C as supplied.<br>6 months, -20 to -70°C under sterile conditions after reconstitution.<br>1 month, 2 to 8°C under sterile conditions after reconstitution.   |
| <b>Shipping:</b>       | The product is shipped at 4°C. Upon receipt, store it immediately at the temperature recommended above.  |

## Application Information

|                                |  |
|--------------------------------|--|
| <b>Recommended Dilution:</b>   | Western Blot (1:1000-1:2000)<br>Note: Optimal dilutions/concentrations should be determined by the end user. |
| <b>Expected / apparent MW:</b> | 33 / 27 kDa  |

Research Use Only

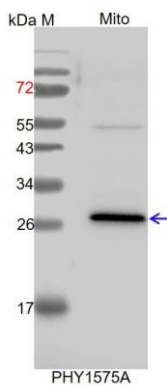
**Confirmed Reactivity:**

*Arabidopsis thaliana*

**Predicted Reactivity:**

Among species analyzed, the sequence of the synthetic peptide used for immunization is 80-99% homologues with the sequence in *Solanum tuberosum*, *Solanum lycopersicum*, *Spinacia oleracea*, *Cucumis sativus*, *Nicotiana tabacum*, *Brassica rapa*, *Brassica napus*, *Populus trichocarpa*, *Gossypium raimondii*.  
For more species homologues information, please contact tech support at [tech@phytoab.com](mailto:tech@phytoab.com).

## Application Example



Mito: 10 µg mitochondria protein from *Arabidopsis thaliana*.

**Electrophoresis:** 15% SDS-PAGE

**Transfer:** blotting to NC (nitrocellulose) membrane for 1 h.

**Blocking:** 5% skim milk at RT or 4°C for 1 h.

**Primary antibody:** 1:1000 dilution overnight at 4°C.

**Secondary antibody:** 1:10000 dilution using Goat Anti-Rabbit IgG H&L(HRP) (Cat# PHY6000).

**Detection:** using chemiluminescence substrate and image were captured with CCD camera.