

Anti-Mitogen-activated protein kinase 3 antibody

Catalog: PHY1917A

Product Information

Description:	Rabbit polyclonal antibody
Background:	MPK3 is a mitogen-activated kinase whose mRNA levels increase in response to touch, cold, salinity stress and chitin oligomers. Also functions in ovule development.
Synonyms:	MPK3, ATMAPK3, ATMPK3, MITOGEN-ACTIVATED PROTEIN KINASE 3
Immunogen:	KLH-conjugated synthetic peptide of MPK3 derived from <i>Arabidopsis thaliana</i> AT3G45640.
Form:	Lyophilized
Quantity:	150 µg
Purification:	Immunogen affinity purified
Reconstitution:	Reconstitution with 150 µl of 0.01 M sterile PBS. "Note: please spin tube briefly prior to opening it to avoid any losses that might occur from lyophilized material adhering to the cap or sides of the tube".
Stability & Storage:	Use a manual defrost freezer and avoid repeated freeze-thaw cycles. 12 months from date of receipt, -20 to -70°C as supplied. 6 months, -20 to -70°C under sterile conditions after reconstitution. 1 month, 2 to 8°C under sterile conditions after reconstitution.
Shipping:	The product is shipped at 4°C. Upon receipt, store it immediately at the temperature recommended above.

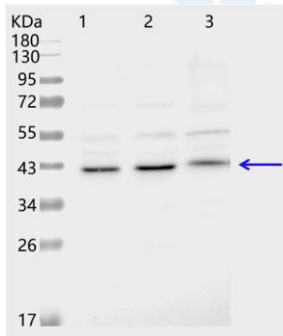
Application Information

Recommended Dilution:	Western Blot (1:1000-1:2000) Note: Optimal dilutions/concentrations should be determined by the end user.
Expected/apparent MW:	43 kDa
Confirmed Reactivity:	<i>Arabidopsis thaliana</i>
Predicted Reactivity:	Among 25 analyzed species, the sequence of the synthetic peptide used for immunization is 80-99% homologues with the sequence in <i>Brassica napus</i> .

Research Use Only

For more species homologues information, please contact tech support at tech@phytoab.com.

Application Example



Lane 1: 10 µg cytosolic protein from *Arabidopsis thaliana* leaf.

Lane 2: 20 µg cytosolic protein from *Arabidopsis thaliana* leaf.

Lane 3: 20 µg total protein from *Arabidopsis thaliana* leaf.

Electrophoresis: 12% SDS-PAGE

Transfer: blotting to NC (nitrocellulose) membrane for 1 h.

Blocking: 5% skim milk at RT or 4°C for 1 h.

PHY1917A

Primary antibody: 1:1000 dilution overnight at 4°C.

Secondary antibody: 1:10000 dilution using Goat Anti-Rabbit IgG H&L (HRP) (Cat# PHY6000).

Detection: using chemiluminescence substrate and image were captured with CCD camera.