

Anti-Protein PROTON GRADIENT REGULATION 5, chloroplastic antibody

Catalog: PHY0340A

Product Information

| | |
|---------------------------------|-------------------------------------------------------------------------------------------------------------------------------------------------------------------------------------------------------------------------------------------------------------------------------|
| Description: | Rabbit polyclonal antibody |
| Background: | Protein PROTON GRADIENT REGULATION 5 is involved in the regulation of the cyclic electron flow (CEF) around Photosystem I. It is essential for photoprotection. |
| Synonyms: | PGR5, ATPGR5, PROTON GRADIENT REGULATION 5 |
| Immunogen: | KLH-conjugated synthetic peptide (19 aa from C terminal section) derived from <i>Arabidopsis thaliana</i> PGR5 (AT2G05620). |
| Form: | Lyophilized |
| Quantity: | 150 µg |
| Purification: | Immunogen affinity purified |
| Reconstitution: | Reconstitution with 150 µl of 0.01 M sterile PBS. "Note: please spin tube briefly prior to opening it to avoid any losses that might occur from lyophilized material adhering to the cap or sides of the tube". |
| Stability & Storage: | Use a manual defrost freezer and avoid repeated freeze-thaw cycles. 12 months from date of receipt, -20 to -70°C as supplied. 6 months, -20 to -70°C under sterile conditions after reconstitution. 1 month, 2 to 8°C under sterile conditions after reconstitution. |
| Shipping: | The product is shipped at 4°C. Upon receipt, store it immediately at the temperature recommended above. |

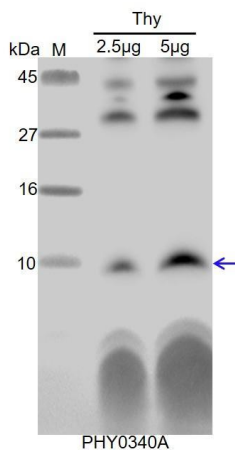
Application Information

| | |
|--------------------------------|---------------------------------------------------------------------------------------------------------------------------------------------|
| Recommended Dilution: | Western Blot (1:1000-1:2000) Note: Optimal dilutions/concentrations should be determined by the end user. |
| Expected / apparent MW: | 14 / 10 kDa |
| Confirmed Reactivity: | <i>Arabidopsis thaliana</i> |
| Predicted Reactivity: | Among species analyzed, the sequence of the synthetic peptide used for immunization is 100% homologous with the sequence in <i>Brassica</i> |

Research Use Only

napus, *Brassica rapa*, *Vitis vinifera*, *Populus trichocarpa*, and 80-99% homologues with the sequence in *Setaria viridis*, *Cucumis sativus*, *Spinacia oleracea*, *Oryza sativa*, *Medicago truncatula*, *Nicotiana tabacum*, *Gossypium raimondii*, *Zea mays*, *Panicum virgatum*, *Triticum aestivum*, *Hordeum vulgare*, *Sorghum bicolor*, *Glycine max*, *Solanum tuberosum*, *Solanum lycopersicum*, *Physcomitrium patens*. For more species homologues information, please contact tech support at tech@phytoab.com.

Application Example



Thy: thylakoid membrane protein from *Arabidopsis thaliana* containing 0.25 µg, and 0.5 µg of chlorophyll, respectively.

Electrophoresis: Tricine-SDS-PAGE

Transfer: blotting to NC (nitrocellulose) membrane for 1 h.

Blocking: 5% skim milk at RT or 4°C for 1 h.

Primary antibody: 1:1000 dilution overnight at 4°C.

Secondary antibody: 1:20000 dilution using Goat Anti-Rabbit IgG H&L (HRP) (Cat# PHY6000).

Detection: using chemiluminescence substrate and image were captured with CCD camera.