

Anti-NAD(P)H-quinone oxidoreductase subunit 3, chloroplastic antibody

Catalog: PHY2993S

Product Information

Description:	Rabbit polyclonal antibody
Background:	NDHC is an NADH dehydrogenase D3 subunit of the chloroplast NAD(P)H dehydrogenase complex.
Synonyms:	NDHC, HIGH CHLOROPHYLL FLUORESCENCE 164
Immunogen:	KLH-conjugated synthetic peptide (20 aa from Central section) derived from <i>Arabidopsis thaliana</i> NDHC (ATCG00440).
Form:	Lyophilized
Quantity:	150 µg
Purification:	Serum
	Peptide affinity form antibody available upon request at info@phytoab.com .
Reconstitution:	Reconstitution with 150 µl of sterile water. "Note: please spin tube briefly prior to opening it to avoid any losses that might occur from lyophilized material adhering to the cap or sides of the tube".
Stability & Storage:	Use a manual defrost freezer and avoid repeated freeze-thaw cycles. 12 months from date of receipt, -20 to -70°C as supplied. 6 months, -20 to -70°C under sterile conditions after reconstitution. 1 month, 2 to 8°C under sterile conditions after reconstitution.
Shipping:	The product is shipped at 4°C. Upon receipt, store it immediately at the temperature recommended above.

Application Information

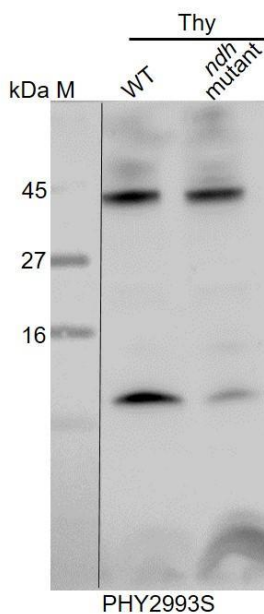
Recommended Dilution:	Western Blot (1:1000-1:5000) Note: Optimal dilutions/concentrations should be determined by the end user.
Expected / apparent MW:	14 / 13 kDa
Confirmed Reactivity:	<i>Arabidopsis thaliana</i>
Predicted Reactivity:	Among species analyzed, the sequence of the synthetic peptide used for immunization is 100% homologues with the sequence in <i>Brassica napus</i> , <i>Glycine max</i> , and 80-99% homologues with the sequence in <i>Gossypium</i>

Research Use Only

raimondii, *Populus trichocarpa*, *Spinacia oleracea*, *Vitis vinifera*,
Solanum lycopersicum, *Solanum tuberosum*, *Nicotiana tabacum*,
Medicago truncatula, *Cucumis sativus*, *Zea mays*, *Setaria viridis*, *Oryza*
sativa, *Sorghum bicolor*, *Triticum aestivum*, *Leymus chinensis*, *Hordeum*
vulgare, *Physcomitrium patens*.

For more species homologues information, please contact tech support at tech@phytoab.com.

Application Example



WT is thylakoid membrane protein from WT of *Arabidopsis thaliana* containing 2 µg of chlorophyll, respectively.

ndh mutant is thylakoid membrane protein from an *ndh* mutant of *Arabidopsis thaliana* containing 2 µg of chlorophyll.

Electrophoresis: Tricine-SDS-PAGE

Transfer: blotting to NC (nitrocellulose) membrane for 1 h.

Blocking: 5% skim milk at RT or 4°C for 1 h.

Primary antibody: 1:5000 dilution overnight at 4°C.

Secondary antibody: 1:10000 dilution using Goat Anti-Rabbit IgG H&L (HRP) (Cat# PHY6000).

Detection: using chemiluminescence substrate and image were captured with CCD camera.