

Anti-40S ribosomal protein S6-1 antibody

Catalog:PHY2026A

Product Information

Description:	Rabbit polyclonal antibody
Background:	RPS6A and RPS6B (AT5G10360) are fully redundant and essential during gametogenesis. It may play an important role in controlling cell growth and proliferation through the selective translation of particular classes of mRNA.
Synonyms:	RPS6A, ATRPS6, RIBOSOMAL PROTEIN S6, RPS6
Immunogen:	KLH-conjugated synthetic peptide (16 aa from C terminal section) derived from <i>Arabidopsis thaliana</i> RPS6A (AT4G31700).
Form:	Lyophilized
Quantity:	150 µg
Purification:	Immunogen affinity purified
Reconstitution:	Reconstitution with 150 µl of 0.01 M sterile PBS. "Note: please spin tube briefly prior to opening it to avoid any losses that might occur from lyophilized material adhering to the cap or sides of the tube".
Stability & Storage:	Use a manual defrost freezer and avoid repeated freeze-thaw cycles. 12 months from date of receipt, -20 to -70°C as supplied. 6 months, -20 to -70°C under sterile conditions after reconstitution. 1 month, 2 to 8°C under sterile conditions after reconstitution.
Shipping:	The product is shipped at 4°C. Upon receipt, store it immediately at the temperature recommended above.

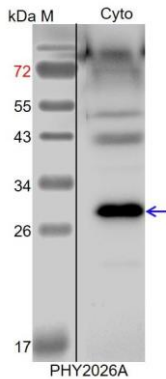
Application Information

Recommended Dilution:	Western Blot (1:1000-1:2000) Note: Optimal dilutions/concentrations should be determined by the end user.
Expected / apparent MW:	28 / 30 kDa
Confirmed Reactivity:	<i>Arabidopsis thaliana</i>
Predicted Reactivity:	Among species analyzed, the sequence of the synthetic peptide used for immunization is 80-99% homologues with the sequence in <i>Brassica rapa</i> , <i>Brassica napus</i> , <i>Medicago truncatula</i> , <i>Solanum tuberosum</i> , <i>Nicotiana tabacum</i> , <i>Solanum lycopersicum</i> .

Research Use Only

The sequence of the synthetic peptide used for immunization is 94% (15/16) homologues with the sequence in RPS6B (AT5G10360). For more species homologues information, please contact tech support at tech@phytoab.com.

Application Example



Cyto: 30 µg cytosolic protein from *Arabidopsis thaliana*.

Electrophoresis: 15% SDS-PAGE

Transfer: blotting to NC (nitrocellulose) membrane for 1 h.

Blocking: 5% skim milk at RT or 4°C for 1 h.

Primary antibody: 1:2000 dilution overnight at 4°C.

Secondary antibody: 1:10000 dilution using Goat Anti-Rabbit IgG H&L(HRP) (Cat# PHY6000).

Detection: using chemiluminescence substrate and image were captured with CCD camera.