

Anti-Cytochrome c biogenesis CcmF C-terminal-like mitochondrial protein, C-terminal antibody

Catalog: PHY1879A

Product Information

Description:	Rabbit polyclonal antibody
Background:	ccmFC forms a complex with CCMFN1, CCMFN2 and CCMH that performs the assembly of heme with c-type apocytochromes in mitochondria.
Synonyms:	ccmFC, CCB452, CCMF HOMOLOG C-TERMINUS, CCMFC, CYTOCHROME C BIOGENESIS 452
Immunogen:	KLH-conjugated synthetic peptide (15 aa from C terminal section) derived from <i>Arabidopsis thaliana</i> ccmFC (ATMG00180).
Form:	Lyophilized
Quantity:	150 µg
Purification:	Immunogen affinity purified
Reconstitution:	Reconstitution with 150 µl of 0.01 M sterile PBS. "Note: please spin tube briefly prior to opening it to avoid any losses that might occur from lyophilized material adhering to the cap or sides of the tube".
Stability & Storage:	Use a manual defrost freezer and avoid repeated freeze-thaw cycles. 12 months from date of receipt, -20 to -70°C as supplied. 6 months, -20 to -70°C under sterile conditions after reconstitution. 1 month, 2 to 8°C under sterile conditions after reconstitution.
Shipping:	The product is shipped at 4°C. Upon receipt, store it immediately at the temperature recommended above.

Application Information

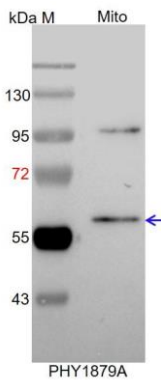
Recommended Dilution:	Western Blot (1:1000-1:2000) Note: Optimal dilutions/concentrations should be determined by the end user.
Expected / apparent MW:	52 / 60 kDa
Confirmed Reactivity:	<i>Arabidopsis thaliana</i>
Predicted Reactivity:	Among species analyzed, the sequence of the synthetic peptide used for immunization is 100% homologous with the sequence in <i>Brassica</i>

Research Use Only

rapa, *Brassica napus*, and 80-99% homologues with the sequence in *Medicago truncatula*, *Vitis vinifera*, *Gossypium raimondii*, *Cucumis sativus*, *Glycine max*, *Spinacia oleracea*, *Solanum tuberosum*, *Nicotiana tabacum*, *Solanum lycopersicum*, *Panicum virgatum*, *Hordeum vulgare*, *Oryza sativa*, *Triticum aestivum*, *Sorghum bicolor*, *Zea mays*, *Setaria viridis*.

For more species homologues information, please contact tech support at tech@phytoab.com.

Application Example



Mito: 15 µg mitochondria protein from *Arabidopsis thaliana*.

Electrophoresis: 12% SDS-PAGE

Transfer: blotting to NC (nitrocellulose) membrane for 1 h.

Blocking: 5% skim milk at RT or 4°C for 1 h.

Primary antibody: 1:2000 dilution overnight at 4°C.

Secondary antibody: 1:10000 dilution using Goat Anti-Rabbit IgG H&L(HRP) (Cat# PHY6000).

Detection: using chemiluminescence substrate and image were captured with CCD camera.