

# Anti-OsFBT1 antibody

Catalog: PHY4161S

## Product Information

<b>Description:</b>	Rabbit polyclonal antibody
<b>Background:</b>	Similar to cDNA clone: J023048A08, full insert sequence. (Os01t0674500-01); Similar to cDNA clone: J023048A08, full insert sequence. (Os01t0674500-02); Similar to cDNA clone: J023048A08, full insert sequence. (Os01t0674500-03)
<b>Synonyms:</b>	F-box protein 34, tubby-like protein 1, tubby-like protein 9/OsFbox034, OsFbox34, OsTLP1, OsTLP9, OsTLP9a, OsTLP9b, OsTLP9c, Os_F0675
<b>Immunogen:</b>	KLH-conjugated synthetic peptide (16 aa from C terminal section) derived from <i>Oryza sativa</i> (Os01g0674500).
<b>Form:</b>	Lyophilized
<b>Quantity:</b>	50 µg
<b>Purification:</b>	Serum
<b>Reconstitution:</b>	Reconstitution with 50µl of sterile water. "Note: please spin tube briefly prior to opening it to avoid any losses that might occur from lyophilized material adhering to the cap or sides of the tube".
<b>Stability &amp; Storage:</b>	Use a manual defrost freezer and avoid repeated freeze-thaw cycles. 12 months from date of receipt, -20 to -70°C as supplied. 6 months, -20 to -70°C under sterile conditions after reconstitution. 1 month, 2 to 8°C under sterile conditions after reconstitution.
<b>Shipping:</b>	The product is shipped at 4°C. Upon receipt, store it immediately at the temperature recommended above.

## Application Information

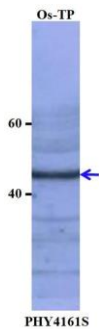
<b>Recommended Dilution:</b>	Western Blot (1:1000-1:2000) Note: Optimal dilutions/concentrations should be determined by the end user.
<b>Expected / apparent MW:</b>	40 kDa
<b>Confirmed Reactivity:</b>	<i>Oryza sativa</i>
<b>Predicted Reactivity:</b>	Among species analyzed, the sequence of the synthetic peptide used for immunization is 80-99% homologues with the sequence in <i>Setaria</i>

Research Use Only

*viridis*, *Triticum aestivum*, *Zea mays*, *Sorghum bicolor*, *Panicum virgatum*, *Hordeum vulgare*.

For more species homologues information, please contact tech support at [tech@phytoab.com](mailto:tech@phytoab.com).

## Application Example



Os-TP: total protein from *Oryza sativa*.

**Primary antibody:** 1:1000 dilution overnight at 4°C.

**Secondary antibody:** 1:10000 dilution using Goat Anti-Rabbit IgG H&L(HRP) (Cat# PHY6000).

**Detection:** using chemiluminescence substrate and image were captured with CCD camera.