

Anti-Os01g0718300 antibody

Catalog: PHY4053S

Product Information

Description:	Rabbit polyclonal antibody
Background:	Receptor serine/threonine kinase, Organ development through controlling cell division and elongation (Os01t0718300-01); Similar to Systemin receptor SR160 precursor (EC 2.7.1.37) (Brassinosteroid LRR receptor kinase). (Os01t0718300-02); Similar to Brassinosteroid-insensitive 1. (Os01t0718300-03)
Synonyms:	BR receptor BRASSINOSTEROID INSENSITIVE1, BRASSINOSTEROID INSENSITIVE 1, BRASSINOSTEROID-INSENSITIVE1, DWARF61, brassinosteroid insensitive 1, dm-type dwarf, dwarf-61/BRI1, OSBRI1, Os BRI1, Osbri1, d61, d61*, dwf42
Immunogen:	KLH-conjugated synthetic peptide (14 aa from Central section) derived from <i>Oryza sativa</i> (Os01g0718300).
Form:	Lyophilized
Quantity:	50 µg
Purification:	Serum
Reconstitution:	Reconstitution with 50µl of sterile water. "Note: please spin tube briefly prior to opening it to avoid any losses that might occur from lyophilized material adhering to the cap or sides of the tube".
Stability & Storage:	Use a manual defrost freezer and avoid repeated freeze-thaw cycles. 12 months from date of receipt, -20 to -70°C as supplied. 6 months, -20 to -70°C under sterile conditions after reconstitution. 1 month, 2 to 8°C under sterile conditions after reconstitution.
Shipping:	The product is shipped at 4°C. Upon receipt, store it immediately at the temperature recommended above.

Application Information

Recommended Dilution:	Western Blot (1:100-1:500) Note: Optimal dilutions/concentrations should be determined by the end user.
------------------------------	------------------------------------------------------------------------------------------------------------

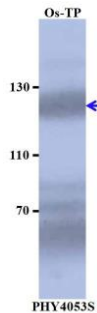
Research Use Only

Expected / apparent MW: 120 kDa

Confirmed Reactivity: *Oryza sativa*

Predicted Reactivity: For more species homologues information, please contact tech support at tech@phytoab.com.

Application Example



Os-TP: total protein from *Oryza sativa*.

Primary antibody: 1:500 dilution overnight at 4°C.

Secondary antibody: 1:10000 dilution using Goat Anti-Rabbit IgG H&L(HRP) (Cat# PHY6000).

Detection: using chemiluminescence substrate and image were captured with CCD camera.