

# Anti-Os03g0232600 antibody

Catalog: PHY4232S

## Product Information

<b>Description:</b>	Rabbit polyclonal antibody
<b>Background:</b>	U-Box E3 ubiquitin ligase, Regulation of brassinosteroid-mediated growth (Os03t0232600-01)
<b>Synonyms:</b>	Dwarf and short grain 1, ERECT LEAF1, Taihu Dwarf1, U-box protein 75, erect leaf1, plant U-box-containing protein 75/DSG1, OsPUB31, OsPUB75, OsTUD1, PUB31, PUB75, TUD1
<b>Immunogen:</b>	KLH-conjugated synthetic peptide (21 aa from C terminal section) derived from <i>Oryza sativa</i> (Os03g0232600).
<b>Form:</b>	Lyophilized
<b>Quantity:</b>	50 µg
<b>Purification:</b>	Serum
<b>Reconstitution:</b>	Reconstitution with 50µl of sterile water. "Note: please spin tube briefly prior to opening it to avoid any losses that might occur from lyophilized material adhering to the cap or sides of the tube".
<b>Stability &amp; Storage:</b>	Use a manual defrost freezer and avoid repeated freeze-thaw cycles. 12 months from date of receipt, -20 to -70°C as supplied. 6 months, -20 to -70°C under sterile conditions after reconstitution. 1 month, 2 to 8°C under sterile conditions after reconstitution.
<b>Shipping:</b>	The product is shipped at 4°C. Upon receipt, store it immediately at the temperature recommended above.

## Application Information

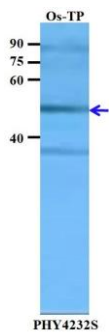
<b>Recommended Dilution:</b>	Western Blot (1:1000-1:2000) Note: Optimal dilutions/concentrations should be determined by the end user.
<b>Expected / apparent MW:</b>	49 kDa
<b>Confirmed Reactivity:</b>	<i>Oryza sativa</i>
<b>Predicted Reactivity:</b>	Among species analyzed, the sequence of the synthetic peptide used for immunization is 80-99% homologues with the sequence in <i>Zea</i>

Research Use Only

*mays, Triticum aestivum, Sorghum bicolor, Panicum virgatum, Setaria viridis.*

For more species homologues information, please contact tech support at [tech@phytoab.com](mailto:tech@phytoab.com).

## Application Example



Os-TP: total protein from *Oryza sativa*.

**Primary antibody:** 1:1000 dilution overnight at 4°C.

**Secondary antibody:** 1:10000 dilution using Goat Anti-Rabbit IgG H&L(HRP) (Cat# PHY6000).

**Detection:** using chemiluminescence substrate and image were captured with CCD camera.