

Anti-Os03g0718100 antibody

Catalog: PHY4098S

Product Information

Description:	Rabbit polyclonal antibody
Background:	Actin 1. (Os03t0718100-01)
Synonyms:	Actin 11, Actin-1, Actin1, Actin1*(act1), actin 1/AC1, ACT11, OsACT1, RAC1, RAc1, act1
Immunogen:	KLH-conjugated synthetic peptide (14 aa from Central section) derived from <i>Oryza sativa</i> (Os03g0718100).
Form:	Lyophilized
Quantity:	50 µg
Purification:	Serum
Reconstitution:	Reconstitution with 50µl of sterile water. "Note: please spin tube briefly prior to opening it to avoid any losses that might occur from lyophilized material adhering to the cap or sides of the tube".
Stability & Storage:	Use a manual defrost freezer and avoid repeated freeze-thaw cycles. 12 months from date of receipt, -20 to -70°C as supplied. 6 months, -20 to -70°C under sterile conditions after reconstitution. 1 month, 2 to 8°C under sterile conditions after reconstitution.
Shipping:	The product is shipped at 4°C. Upon receipt, store it immediately at the temperature recommended above.

Application Information

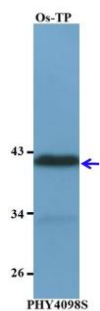
Recommended Dilution:	Western Blot (1:1000-1:2000) Note: Optimal dilutions/concentrations should be determined by the end user.
Expected / apparent MW:	42 kDa
Confirmed Reactivity:	<i>Oryza sativa</i>
Predicted Reactivity:	Among species analyzed, the sequence of the synthetic peptide used for immunization is 100% homologues with the sequence in <i>Brassica napus</i> , <i>Arabidopsis thaliana</i> , <i>Brassica rapa</i> , <i>Hordeum vulgare</i> , <i>Glycine max</i> , <i>Triticum aestivum</i> , <i>Gossypium raimondii</i> , <i>Cucumis</i>

Research Use Only

sativus, Zea mays, Vitis vinifera, Solanum tuberosum, Physcomitrium patens, Solanum lycopersicum, Setaria viridis, Nicotiana tabacum, Populus trichocarpa, Sorghum bicolor, Medicago truncatula.

For more species homologues information, please contact tech support at tech@phytoab.com.

Application Example



Os-TP: total protein from *Oryza sativa*.

Primary antibody: 1:2000 dilution overnight at 4°C.

Secondary antibody: 1:10000 dilution using Goat Anti-Rabbit IgG H&L(HRP) (Cat# PHY6000).

Detection: using chemiluminescence substrate and image were captured with CCD camera.