

Anti-Os03g0821100 antibody

Catalog: PHY4202S

Product Information

Description:	Rabbit polyclonal antibody
Background:	Similar to Non-cell-autonomous heat shock cognate protein 70. (Os03t0821100-01)
Synonyms:	HEAT SHOCK PROTEIN 70KD, Mediator 37_4, heat shock protein 70, heat-shock protein 70/Med37_4, OsHSP70, OsMed37_4, hsp70
Immunogen:	KLH-conjugated synthetic peptide (14 aa from C terminal section) derived from <i>Oryza sativa</i> (Os03g0821100).
Form:	Lyophilized
Quantity:	50 µg
Purification:	Serum
Reconstitution:	Reconstitution with 50µl of sterile water. "Note: please spin tube briefly prior to opening it to avoid any losses that might occur from lyophilized material adhering to the cap or sides of the tube".
Stability &	Use a manual defrost freezer and avoid repeated freeze-thaw cycles.
Storage:	12 months from date of receipt, -20 to -70°C as supplied. 6 months, -20 to -70°C under sterile conditions after reconstitution. 1 month, 2 to 8°C under sterile conditions after reconstitution.
Shipping:	The product is shipped at 4°C. Upon receipt, store it immediately at the temperature recommended above.

Application Information

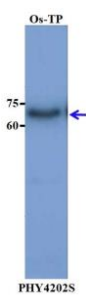
Recommended Dilution:	Western Blot (1:1000-1:2000) Note: Optimal dilutions/concentrations should be determined by the end user.
Expected / apparent MW:	71 kDa
Confirmed Reactivity:	<i>Oryza sativa</i>
Predicted Reactivity:	Among species analyzed, the sequence of the synthetic peptide used for immunization is 100% homologues with the sequence in <i>Brassica napus</i> , <i>Triticum aestivum</i> , <i>Vitis vinifera</i> , <i>Panicum virgatum</i> , <i>Hordeum</i>

Research Use Only

vulgare, *Solanum lycopersicum*, *Glycine max*, *Spinacia oleracea*,
Arabidopsis thaliana, *Solanum tuberosum*, *Gossypium raimondii*,
Cucumis sativus, *Brassica rapa*, *Nicotiana tabacum*,
Chlamydomonas reinhardtii, *Physcomitrium patens*, *Setaria viridis*,
Populus trichocarpa, *Medicago truncatula*.

For more species homologues information, please contact tech support at tech@phytoab.com.

Application Example



Os-TP: total protein from *Oryza sativa*.

Primary antibody: 1:1000 dilution overnight at 4°C.

Secondary antibody: 1:10000 dilution using Goat Anti-Rabbit IgG H&L(HRP) (Cat# PHY6000).

Detection: using chemiluminescence substrate and image were captured with CCD camera.