

Anti-Os04g0486600, C-terminal antibody

Catalog: PHY4191S

Product Information

Description:	Rabbit polyclonal antibody
Background:	Similar to Glyceraldehyde-3-phosphate dehydrogenase, cytosolic 3 (EC 1.2.1.12). (Os04t0486600-01); Similar to Glyceralde-3-phosphate dehydrogenase. (Os04t0486600-02)
Synonyms:	Glyceraldehyde-3-phosphate dehydrogenase, cytosolic GAPDH2, cytosolic glyceraldehyde-3-phosphate dehydrogenase 2/GAPDH, OsGapC2
Immunogen:	KLH-conjugated synthetic peptide (22 aa from C terminal section) derived from <i>Oryza sativa</i> (Os04g0486600).
Form:	Lyophilized
Quantity:	50 µg
Purification:	Serum
Reconstitution:	Reconstitution with 50µl of sterile water. "Note: please spin tube briefly prior to opening it to avoid any losses that might occur from lyophilized material adhering to the cap or sides of the tube".
Stability & Storage:	Use a manual defrost freezer and avoid repeated freeze-thaw cycles. 12 months from date of receipt, -20 to -70°C as supplied. 6 months, -20 to -70°C under sterile conditions after reconstitution. 1 month, 2 to 8°C under sterile conditions after reconstitution.
Shipping:	The product is shipped at 4°C. Upon receipt, store it immediately at the temperature recommended above.

Application Information

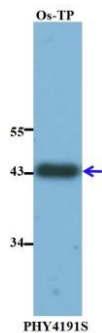
Recommended Dilution:	Western Blot (1:1000-1:3000) Note: Optimal dilutions/concentrations should be determined by the end user.
Expected / apparent MW:	36 kDa
Confirmed Reactivity:	<i>Oryza sativa</i>
Predicted Reactivity:	Among species analyzed, the sequence of the synthetic peptide used for immunization is 100% homologues with the sequence in <i>Triticum</i>

Research Use Only

aestivum, *Setaria viridis*, *Panicum virgatum*, *Zea mays*, *Hordeum vulgare*, and 80-99% homologues with the sequence in *Sorghum bicolor*, *Populus trichocarpa*, *Gossypium raimondii*, *Solanum lycopersicum*, *Leymus chinensis*.

For more species homologues information, please contact tech support at tech@phytoab.com.

Application Example



Os-TP: total protein from *Oryza sativa*.

Primary antibody: 1:1000 dilution overnight at 4°C.

Secondary antibody: 1:10000 dilution using Goat Anti-Rabbit IgG H&L(HRP) (Cat# PHY6000).

Detection: using chemiluminescence substrate and image were captured with CCD camera.