

Anti-WRKY transcription factor 18 antibody

Catalog: PHY1212A

Product Information

Description:	Rabbit polyclonal antibody
Background:	WRKY18 is a pathogen-induced transcription factor. It binds W-box sequences in vitro. It forms protein complexes and with WRKY40 and WRKY60. WRKY18 (AT4G31800), WRKY40 (AT1G80840) and WRKY60 (AT2G25000) have partially redundant roles in response to the hemibiotrophic bacterial pathogen <i>Pseudomonas syringae</i> and the necrotrophic fungal pathogen <i>Botrytis cinerea</i> , with WRKY18 playing a more important role than the other two.
Synonyms:	WRKY18, ARABIDOPSIS THALIANA WRKY DNA-BINDING PROTEIN 18, ATWRKY18, WRKY DNA-BINDING PROTEIN 18
Immunogen:	KLH-conjugated synthetic peptide (15 aa from N terminal section) derived from <i>Arabidopsis thaliana</i> WRKY18 (AT4G31800).
Form:	Lyophilized
Quantity:	150 µg
Purification:	Immunogen affinity purified
Reconstitution:	Reconstitution with 150 µl of 0.01M sterile PBS. "Note: please spin tube briefly prior to opening it to avoid any losses that might occur from lyophilized material adhering to the cap or sides of the tube".
Stability &	Use a manual defrost freezer and avoid repeated freeze-thaw cycles.
Storage:	12 months from date of receipt, -20 to -70°C as supplied. 6 months, -20 to -70°C under sterile conditions after reconstitution. 1 month, 2 to 8°C under sterile conditions after reconstitution.
Shipping:	The product is shipped at 4°C. Upon receipt, store it immediately at the temperature recommended above.

Application Information

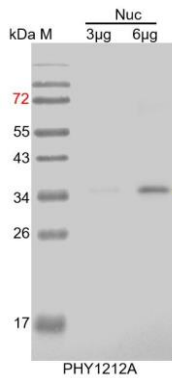
Recommended Dilution:	Western Blot (1:1000-1:2000) Note: Optimal dilutions/concentrations should be determined by the end user.
Expected / apparent MW:	35 kDa

Research Use Only

Confirmed Reactivity: *Arabidopsis thaliana*

Predicted Reactivity: For more species homologues information, please contact tech support at tech@phytoab.com.

Application Example



Nuc: 3 µg and 6 µg nuclear protein from *Arabidopsis thaliana*, respectively.

Electrophoresis: 15% SDS-PAGE

Transfer: blotting to NC (nitrocellulose) membrane for 1 h.

Blocking: 5% skim milk at RT or 4°C for 1 h.

Primary antibody: 1:1000 dilution overnight at 4°C.

Secondary antibody: 1:10000 dilution using Goat Anti-Rabbit IgG H&L(HRP) (Cat# PHY6000).

Detection: using chemiluminescence substrate and image were captured with CCD camera.