

# Anti-RNA2 polyprotein antibody

Catalog: PHY3021S

## Product Information

<b>Description:</b>	Rabbit polyclonal antibody
<b>Background:</b>	sCP is responsible for viral RNA2 accumulation. It may function by recruiting the RNA1-encoded polyprotein that contains the replication protein to RNA2 and enable its replication.
<b>Synonyms:</b>	sCP, Genome polyprotein M, M RNA polyprotein, Middle component RNA polyprotein, P2
<b>Immunogen:</b>	Recombinant protein of sCP (1-213aa) derived from <i>Cowpea mosaic virus</i> YP_009268886.1.
<b>Form:</b>	Lyophilized
<b>Quantity:</b>	150 µg
<b>Purification:</b>	Serum
<b>Reconstitution:</b>	Reconstitution with 150 µl of sterile water. "Note: please spin tube briefly prior to opening it to avoid any losses that might occur from lyophilized material adhering to the cap or sides of the tube".
<b>Stability &amp; Storage:</b>	Use a manual defrost freezer and avoid repeated freeze-thaw cycles. 12 months from date of receipt, -20 to -70°C as supplied. 6 months, -20 to -70°C under sterile conditions after reconstitution. 1 month, 2 to 8°C under sterile conditions after reconstitution.
<b>Shipping:</b>	The product is shipped at 4°C. Upon receipt, store it immediately at the temperature recommended above.

## Application Information

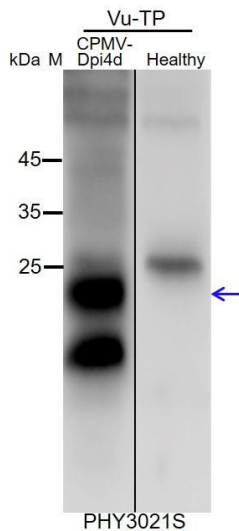
<b>Recommended Dilution:</b>	Western Blot (1:1000-1:2000) Note: Optimal dilutions/concentrations should be determined by the end user.
<b>Expected / apparent MW:</b>	23.7 kDa
<b>Confirmed Reactivity:</b>	Anti-sCP recognizes the full length small capsid protein of cowpea mosaic virus, sCP, predicted MW ~23.7 KDa

Research Use Only

**Predicted Reactivity:**

For more species homologues information, please contact tech support at [tech@phytoab.com](mailto:tech@phytoab.com).

**Application Example**



**CPMV-Dpi4d:** 50 µg total *Vigna unguiculata*(cpa/cpa) leaf protein.

**Healthy:** 50 µg total *Vigna unguiculata*(cpa/cpa) healthy leaf protein.

**Electrophoresis:** 10% SDS-PAGE

**Transfer:** blotting to PVDF membrane for 30 min.

**Blocking:** 5% skim milk at RT or 4°C for 1 h.

**Primary antibody:** 1:1000 dilution overnight at 4°C.

**Secondary antibody:** 1:10000 dilution using Goat Anti-Rabbit IgG H&L (HRP) ([Cat# PHY6000](#)).

**Detection:** using chemiluminescence substrate and image were captured with CCD camera.