

Anti-SNF1-related kinase 2.4/2.5 antibody

Catalog: PHY1436A

Product Information

Description:	Rabbit polyclonal antibody
Background:	The SnRK2 are known to be involved in plant response to drought, salinity, and in abscisic acid (ABA)-dependent plant development. The SnRK2 family members are including SnRK2.1 (AT5G08590), SnRK2.2 (AT3G50500), SnRK2.3 (AT5G66880), SnRK2.4 (AT1G10940), SnRK2.5 (AT5G63650), SnRK2.6 (AT4G33950), SnRK2.7 (AT4G40010), SnRK2.8 (AT1G78290), SnRK2.9 (AT2G23030), SnRK2.10 (AT1G60940).
Synonyms:	SNRK2.4/5, SNF1-RELATED PROTEIN KINASE 2.4/5, SNF1-RELATED PROTEIN KINASE 2A/H, SNRK2-4/5, SRK2A/H, SNF1-RELATED PROTEIN KINASE 2.4/5
Immunogen:	KLH-conjugated synthetic peptide (15 aa from central section) derived from <i>Arabidopsis thaliana</i> SNRK2.4 (AT1G10940), SNRK2.5 (AT5G63650).
Form:	Lyophilized
Quantity:	150 µg
Purification:	Immunogen affinity purified
Reconstitution:	Reconstitution with 150 µl of 0.01 M sterile PBS. "Note: please spin tube briefly prior to opening it to avoid any losses that might occur from lyophilized material adhering to the cap or sides of the tube".
Stability & Storage:	Use a manual defrost freezer and avoid repeated freeze-thaw cycles. 12 months from date of receipt, -20 to -70°C as supplied. 6 months, -20 to -70°C under sterile conditions after reconstitution. 1 month, 2 to 8°C under sterile conditions after reconstitution.
Shipping:	The product is shipped at 4°C. Upon receipt, store it immediately at the temperature recommended above.

Application Information

Applications:	Western Blot (1:1000-1:2000) Note: Optimal dilutions/concentrations should be determined by the end user.
Expected Results:	41 kDa (SNRK2.4), 42 kDa (SNRK2.5)

Research Use Only

Confirmed Reactivity:

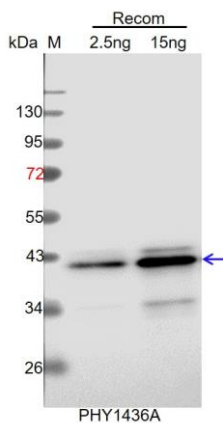
Coming soon

Predicted Reactivity:

Among species analyzed the sequence of the synthetic peptide used for immunization is 100% homologues with the sequence in *Brassica rapa*, *Medicago truncatula*, *Oryza sativa*, *Populus trichocarpa*, *Brassica napus*, *Solanum lycopersicum*, *Solanum tuberosum*, *Glycine max*, *Vitis vinifera*, *Spinacia oleracea*, *Gossypium raimondii*, *Nicotiana tabacum*, *Cucumis sativus*.

For more species homologues information, please contact tech support at tech@phytoab.com.

Application Example



Recom: 2.5 ng and 15 ng recombinant protein containing the peptide for immunization and having a molecular mass of 43kDa.

Electrophoresis: 12% SDS-PAGE

Transfer: blotting to NC (nitrocellulose) membrane for 1 h.

Blocking: 5% skim milk at RT or 4°C for 1 h.

Primary antibody: 1:1000 dilution overnight at 4°C.

Secondary antibody: 1:10000 dilution using Goat Anti-Rabbit IgG H&L(HRP) (Cat# PHY6000).

Detection: using chemiluminescence substrate and image were captured with CCD camera.