

Anti-Glutamyl-tRNA reductase antibody

Catalog: PHY5506S

Product Information

Description:	Rabbit polyclonal antibody
Background:	Plants, algae and most bacteria synthesize 5-aminolevulinic acid (ALA), the universal precursor of tetrapyrroles such as heme, chlorophyll and coenzyme B ₁₂ , by a two-step transformation involving the NADPH-dependent glutamyl-tRNA reductase (HemaA), which reduces tRNA-bound glutamate to glutamate-1-semialdehyde (GSA), and the pyridoxamine 5'-phosphate-dependent glutamate-1-semialdehyde-2,1-aminomutase (HemL), responsible for the isomerization of GSA into ALA.
Synonyms:	CrHEMA1, HEM1, HEMA
Immunogen:	Recombinant protein of CrHEMA1 (42-522aa) derived from <i>Chlamydomonas reinhardtii</i> CrHEMA1 (Cre07.g342150).
Form:	Lyophilized
Quantity:	150 µg
Purification:	Serum
Reconstitution:	Reconstitution with 150µl of sterile water. "Note: please spin tube briefly prior to opening it to avoid any losses that might occur from lyophilized material adhering to the cap or sides of the tube".
Stability &	Use a manual defrost freezer and avoid repeated freeze-thaw cycles.
Storage:	12 months from date of receipt, -20 to -70°C as supplied. 6 months, -20 to -70°C under sterile conditions after reconstitution. 1 month, 2 to 8°C under sterile conditions after reconstitution.
Shipping:	The product is shipped at 4°C. Upon receipt, store it immediately at the temperature recommended above.

Application Information

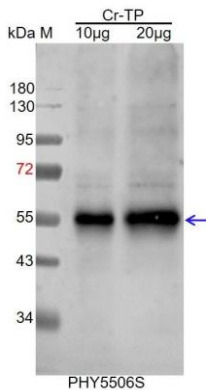
Recommended Dilution:	Western Blot (1:1000-1:2000) Note: Optimal dilutions/concentrations should be determined by the end user.
Expected / apparent MW:	57 kDa

Research Use Only

Confirmed Reactivity: *Chlamydomonas reinhardtii*

Predicted Reactivity: For homologues with other species especially algae, please contact tech support at tech@phytoab.com.

Application Example



Cr-TP: 10 µg and 20 µg total protein from *Chlamydomonas reinhardtii*.

Electrophoresis: 12% SDS-PAGE

Transfer: blotting to NC (nitrocellulose) membrane for 1 h.

Blocking: 5% skim milk at RT or 4°C for 1 h.

Primary antibody: 1:1000 dilution overnight at 4°C.

Secondary antibody: 1:10000 dilution using Goat Anti-Rabbit IgG H&L(HRP) (Cat# PHY6000).

Detection: using chemiluminescence substrate and image were captured with CCD camera.