

Anti-Ribulose biphosphate carboxylase large chain, C-terminal antibody

Catalog: PHY5239A

Product Information

Description:	Rabbit polyclonal antibody
Background:	cbbL
Synonyms:	cbbL
Immunogen:	KLH-conjugated synthetic peptide (13 aa from C terminal section) <i>Synechocystis sp.</i> PCC 6803 cbbL (slr0009).
Form:	Lyophilized
Quantity:	150 µg
Purification:	Immunogen affinity purified
Reconstitution:	Reconstitution with 150 µl of 0.01 M sterile PBS. "Note: please spin tube briefly prior to opening it to avoid any losses that might occur from lyophilized material adhering to the cap or sides of the tube".
Stability & Storage:	Use a manual defrost freezer and avoid repeated freeze-thaw cycles. 12 months from date of receipt, -20 to -70°C as supplied. 6 months, -20 to -70°C under sterile conditions after reconstitution. 1 month, 2 to 8°C under sterile conditions after reconstitution.
Shipping:	The product is shipped at 4°C. Upon receipt, store it immediately at the temperature recommended above.

Application Information

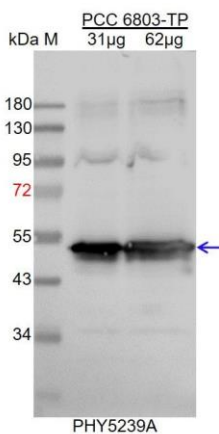
Recommended Dilution:	Western Blot (1:1000-1:2000) Note: Optimal dilutions/concentrations should be determined by the end user.
Expected / apparent MW:	52 / 53 kDa
Confirmed Reactivity:	<i>Synechocystis sp.</i> PCC 6803
Predicted Reactivity:	Among species analyzed, the sequence of the synthetic peptide used for immunization is 80-99% homologues with the sequence in <i>Triticum aestivum</i> , <i>Arabidopsis thaliana</i> , <i>Oryza sativa</i> , <i>Nicotiana tabacum</i> , <i>Brassica rapa</i> , <i>Leymus chinensis</i> , <i>Brassica napus</i> , <i>Setaria</i>

Research Use Only

viridis, *Medicago truncatula*, *Glycine max*, *Cucumis sativus*,
Gossypium raimondii, *Hordeum vulgare*, *Solanum lycopersicum*,
Panicum virgatum, *Solanum tuberosum*, *Spinacia oleracea*,
Chlamydomonas reinhardtii, *Populus trichocarpa*, *Physcomitrium*
patens, *Vitis vinifera*.

For more species homologues information, please contact tech support at tech@phytoab.com.

Application Example



PCC 6803-TP: 31 µg and 62 µg total protein from *Synechocystis sp.* PCC 6803, respectively.

Electrophoresis: 12% SDS-PAGE

Transfer: blotting to NC (nitrocellulose) membrane for 1 h.

Blocking: 5% skim milk at RT or 4°C for 1 h.

Primary antibody: 1:1000 dilution overnight at 4°C.

Secondary antibody: 1:10000 dilution using Goat Anti-Rabbit IgG H&L(HRP) (Cat# PHY6000).

Detection: using chemiluminescence substrate and image were captured with CCD camera.