

# Anti-Photosystem I reaction center subunit II, C-terminal antibody

Catalog: PHY5234A

## Product Information

<b>Description:</b>	Rabbit polyclonal antibody
<b>Background:</b>	PsaD can form complexes with ferredoxin and ferredoxin-oxidoreductase in photosystem I (PS I) reaction center.
<b>Synonyms:</b>	psaD
<b>Immunogen:</b>	KLH-conjugated synthetic peptide (11 aa from C terminal section) derived from <i>Synechocystis sp.</i> PCC 6803 psaD (slr0737).
<b>Form:</b>	Lyophilized
<b>Quantity:</b>	150 µg
<b>Purification:</b>	Immunogen affinity purified
<b>Reconstitution:</b>	Reconstitution with 150 µl of 0.01 M sterile PBS. "Note: please spin tube briefly prior to opening it to avoid any losses that might occur from lyophilized material adhering to the cap or sides of the tube".
<b>Stability &amp; Storage:</b>	Use a manual defrost freezer and avoid repeated freeze-thaw cycles. 12 months from date of receipt, -20 to -70°C as supplied. 6 months, -20 to -70°C under sterile conditions after reconstitution. 1 month, 2 to 8°C under sterile conditions after reconstitution.
<b>Shipping:</b>	The product is shipped at 4°C. Upon receipt, store it immediately at the temperature recommended above.

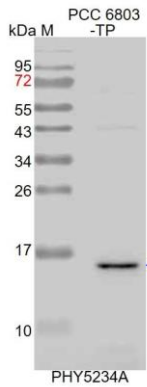
## Application Information

<b>Recommended Dilution:</b>	Western Blot (1:1000-1:2000) Note: Optimal dilutions/concentrations should be determined by the end user.
<b>Expected / apparent MW:</b>	16 kDa
<b>Confirmed Reactivity:</b>	<i>Synechocystis sp.</i> PCC 6803
<b>Predicted Reactivity:</b>	Among species analyzed, the sequence of the synthetic peptide used for immunization is 80-99% homologues with the sequence in <i>Synechococcus elongatus</i> PCC 7942.

Research Use Only

For homologues with other species especially algae, please contact tech support at [tech@phytoab.com](mailto:tech@phytoab.com).

## Application Example



PCC 6803-TP: 10  $\mu$ g total protein from *Synechocystis sp.* PCC 6803.

**Electrophoresis:** 15% SDS-PAGE

**Transfer:** blotting to NC (nitrocellulose) membrane for 1 h.

**Blocking:** 5% skim milk at RT or 4°C for 1 h.

**Primary antibody:** 1:1000 dilution overnight at 4°C.

**Secondary antibody:** 1:10000 dilution using Goat Anti-Rabbit IgG H&L(HRP) (Cat# PHY6000).

**Detection:** using chemiluminescence substrate and image were captured with CCD camera.