

# Anti-NdhN, chloroplastic antibody

Catalog: PHY0335

## Product Information

<b>Description:</b>	Rabbit polyclonal antibody
<b>Background:</b>	Chloroplast NADH dehydrogenase-like (NDH) complex mediates cyclic electron transport around PSI and chlororespiration. Chloroplast NDH consists of five subcomplexes. In higher plants, NDH complex further associates with photosystem I (PSI) to form the NDH-PSI supercomplex. NdhN is a subunit of the NDH complex.
<b>Synonyms:</b>	NdhN, NAD(P)H dehydrogenase subunit N, NADH-plastoquinone oxidoreductase subunit N, NDH subunit N
<b>Immunogen:</b>	Recombinant, mature protein without chloroplast targeting peptide of <i>Arabidopsis thaliana</i> NdhN (AT5G58260).
<b>Form:</b>	Lyophilized
<b>Quantity:</b>	150 µg
<b>Purification:</b>	Protein A purified
<b>Reconstitution:</b>	Reconstitution with 150 µl of 0.01 M sterile PBS. "Note: please spin tube briefly prior to opening it to avoid any losses that might occur from lyophilized material adhering to the cap or sides of the tube".
<b>Stability &amp; Storage:</b>	Use a manual defrost freezer and avoid repeated freeze-thaw cycles. 12 months from date of receipt, -20 to -70°C as supplied. 6 months, -20 to -70°C under sterile conditions after reconstitution. 1 month, 2 to 8°C under sterile conditions after reconstitution.
<b>Shipping:</b>	The product is shipped at 4°C. Upon receipt, store it immediately at the temperature recommended above.

## Application Information

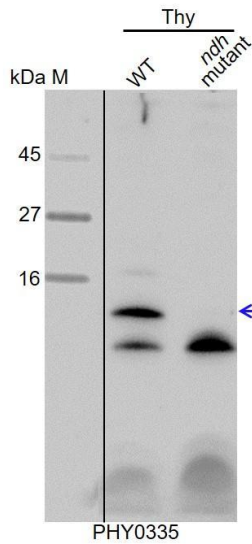
<b>Recommended Dilution:</b>	Western Blot (1:1000-1:2000) Note: Optimal dilutions/concentrations should be determined by the end user.
<b>Expected / apparent MW:</b>	23 / 13 kDa
<b>Confirmed Reactivity:</b>	<i>Arabidopsis thaliana</i>

Research Use Only

**Predicted Reactivity:**

For more species homologues information, please contact tech support at [tech@phytoab.com](mailto:tech@phytoab.com).

**Application Example**



Thy-WT: thylakoid membrane protein from *Arabidopsis thaliana* containing 2 µg of chlorophyll.

Thy-*ndh*: thylakoid membrane protein from an *ndh* mutant of *Arabidopsis thaliana* containing 2 µg of chlorophyll.

**Electrophoresis:** Tricine-SDS-PAGE

**Transfer:** blotting to NC (nitrocellulose) membrane for 1 h.

← **Blocking:** 5% skim milk at RT or 4°C for 1 h.

**Primary antibody:** 1:2000 dilution overnight at 4°C.

**Secondary antibody:** 1:10000 dilution using Goat Anti-Rabbit IgG H&L(HRP) (Cat# PHY6000).

**Detection:** using chemiluminescence substrate and image were captured with CCD camera.