

Anti-NdhJ, chloroplastic antibody

Catalog: PHY0333

Product Information

Description:	Rabbit polyclonal antibody
Background:	Chloroplast NADH dehydrogenase-like (NDH) complex mediates cyclic electron transport around PSI and chlororespiration. Chloroplast NDH consists of five subcomplexes. In higher plants, NDH complex further associates with photosystem I (PSI) to form the NDH-PSI supercomplex. NdhJ is a subunit of the NDH complex.
Synonyms:	NdhJ, NAD(P)H dehydrogenase subunit J, NADH-plastoquinone oxidoreductase subunit J
Immunogen:	Recombinant protein of NdhJ (1-158 aa) derived from <i>Arabidopsis thaliana</i> ATCG00420.
Form:	Lyophilized
Quantity:	150 µg
Purification:	Protein A purified
Reconstitution:	Reconstitution with 150 µl of 0.01 M sterile PBS. "Note: please spin tube briefly prior to opening it to avoid any losses that might occur from lyophilized material adhering to the cap or sides of the tube".
Stability & Storage:	Use a manual defrost freezer and avoid repeated freeze-thaw cycles. 12 months from date of receipt, -20 to -70°C as supplied. 6 months, -20 to -70°C under sterile conditions after reconstitution. 1 month, 2 to 8°C under sterile conditions after reconstitution.
Shipping:	The product is shipped at 4°C. Upon receipt, store it immediately at the temperature recommended above.

Application Information

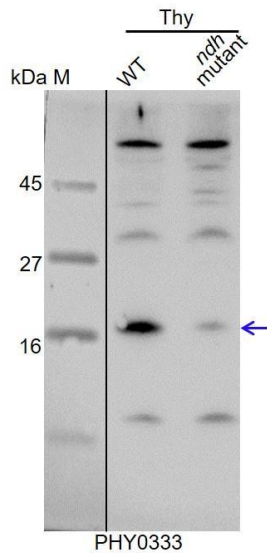
Recommended Dilution:	Western Blot (1:1000-1:2000) Note: Optimal dilutions/concentrations should be determined by the end user.
Expected / apparent MW:	19 / 17 kDa
Confirmed Reactivity:	<i>Arabidopsis thaliana</i>

Research Use Only

Predicted Reactivity:

For more species homologues information, please contact tech support at tech@phytoab.com.

Application Example



Thy-WT: thylakoid membrane protein from *Arabidopsis thaliana* containing 2 µg of chlorophyll.

Thy-*ndh*: thylakoid membrane protein from an *ndh* mutant of *Arabidopsis thaliana* containing 2 µg of chlorophyll.

Electrophoresis: Tricine-SDS-PAGE

Transfer: blotting to NC (nitrocellulose) membrane for 1 h.

Blocking: 5% skim milk at RT or 4°C for 1 h.

Primary antibody: 1:2000 dilution overnight at 4°C.

Secondary antibody: 1:10000 dilution using Goat Anti-Rabbit IgG H&L(HRP) (Cat# PHY6000).

Detection: using chemiluminescence substrate and image were captured with CCD camera.