

Anti-PsaL subunit of Photosystem I antibody

Catalog: PHY0122A

Product Information

Description:	Rabbit polyclonal antibody
Background:	PSI is an integral membrane multi-protein complex that catalyzes the electron transfer from plastocyanin to ferredoxin. PsaL is binding pigments and has been shown to be involved in trimerization of PSI in cyanobacteria (but not in plants) and bind pigments in plants and cyanobacteria.
Synonyms:	PsaL, PSI-L, PHOTOSYSTEM I SUBUNIT L
Immunogen:	KLH-conjugated synthetic peptide (15 aa from C terminal section) derived from <i>Arabidopsis thaliana</i> PsaL (AT4G12800).
Form:	Lyophilized
Quantity:	150 µg
Purification:	Immunogen affinity purified
Reconstitution:	Reconstitution with 150 µl of 0.01 M sterile PBS. "Note: please spin tube briefly prior to opening it to avoid any losses that might occur from lyophilized material adhering to the cap or sides of the tube".
Stability & Storage:	Use a manual defrost freezer and avoid repeated freeze-thaw cycles. 12 months from date of receipt, -20 to -70°C as supplied. 6 months, -20 to -70°C under sterile conditions after reconstitution. 1 month, 2 to 8°C under sterile conditions after reconstitution.
Shipping:	The product is shipped at 4°C. Upon receipt, store it immediately at the temperature recommended above.

Application Information

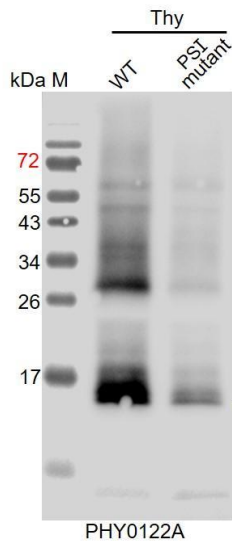
Recommended Dilution:	Western Blot (1:1000-1:2000) Note: Optimal dilutions/concentrations should be determined by the end user.
Expected / apparent MW:	23 / 15 kDa
Confirmed Reactivity:	<i>Arabidopsis thaliana</i>
Predicted Reactivity:	Among species analyzed, the sequence of the synthetic peptide used for immunization is 100% homologous with the sequence in <i>Zea</i>

Research Use Only

mays, and 80-99% homologues with the sequence in *Brassica napus*, *Brassica rapa*, *Glycine max*, *Gossypium raimondii*, *Spinacia oleracea*, *Medicago truncatula*, *Populus trichocarpa*, *Solanum tuberosum*, *Solanum lycopersicum*, *Nicotiana tabacum*, *Vitis vinifera*, *Cucumis sativus*, *Sorghum bicolor*, *Oryza sativa*, *Panicum virgatum*, *Setaria viridis*.

For more species homologues information, please contact tech support at tech@phytoab.com.

Application Example



Thy-WT: thylakoid membrane protein from WT of *Arabidopsis thaliana* leaf containing 0.5 µg of chlorophyll.

Thy-PS I mutant: thylakoid membrane protein from an Arabidopsis mutant with low accumulation of PS I containing 0.5 µg of chlorophyll.

Electrophoresis: 15% SDS-PAGE

Transfer: blotting to NC (nitrocellulose) membrane for 1 h.

Blocking: 5% skim milk at RT or 4°C for 1 h.

Primary antibody: 1:2000 dilution overnight at 4°C.

Secondary antibody: 1:10000 dilution using Goat Anti-Rabbit IgG H&L(HRP) (Cat# PHY6000).

Detection: using chemiluminescence substrate and image were captured with CCD camera.