

# Anti-PsaL subunit of Photosystem I antibody

Catalog: PHY0064A

## Product Information

<b>Description:</b>	Rabbit polyclonal antibody
<b>Background:</b>	PSI is an integral membrane multi-protein complex that catalyzes the electron transfer from plastocyanin to ferredoxin. PsaL is binding pigments and has been shown to be involved in trimerization of PSI in cyanobacteria (but not in plants) and bind pigments in plants and cyanobacteria.
<b>Synonyms:</b>	PsaL, PSI-L, PHOTOSYSTEM I SUBUNIT L
<b>Immunogen:</b>	KLH-conjugated synthetic peptide (15 aa from C terminal section) derived from <i>Arabidopsis thaliana</i> PsaL (AT4G12800).
<b>Form:</b>	Lyophilized
<b>Quantity:</b>	150 µg
<b>Purification:</b>	Immunogen affinity purified
<b>Reconstitution:</b>	Reconstitution with 150 µl of 0.01 M sterile PBS. "Note: please spin tube briefly prior to opening it to avoid any losses that might occur from lyophilized material adhering to the cap or sides of the tube".
<b>Stability &amp; Storage:</b>	Use a manual defrost freezer and avoid repeated freeze-thaw cycles. 12 months from date of receipt, -20 to -70°C as supplied. 6 months, -20 to -70°C under sterile conditions after reconstitution. 1 month, 2 to 8°C under sterile conditions after reconstitution.
<b>Shipping:</b>	The product is shipped at 4°C. Upon receipt, store it immediately at the temperature recommended above.

## Application Information

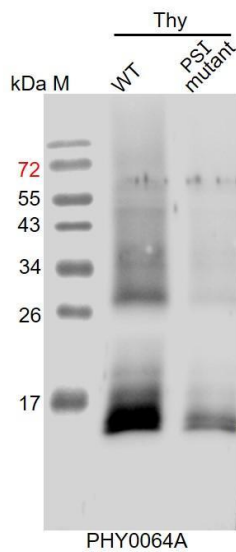
<b>Recommended Dilution:</b>	Western Blot(1:1000-1:2000) Note: Optimal dilutions/concentrations should be determined by the end user.
<b>Expected / apparent MW:</b>	23 kDa
<b>Confirmed Reactivity:</b>	<i>Arabidopsis thaliana</i>
<b>Predicted Reactivity:</b>	Among species analyzed, the sequence of the synthetic peptide used for immunization is 100% homologues with the sequence in <i>Brassica napus</i> , <i>Brassica rapa</i> , <i>Zea mays</i> , and 80-99% homologues with the

Research Use Only

sequence in *Glycine max*, *Populus trichocarpa*, *Gossypium raimondii*, *Spinacia oleracea*, *Medicago truncatula*, *Nicotiana tabacum*, *Solanum tuberosum*, *Solanum lycopersicum*, *Vitis vinifera*, *Cucumis sativus*, *Hordeum vulgare*, *Sorghum bicolor*, *Triticum aestivum*, *Oryza sativa*, *Panicum virgatum*, *Setaria viridis*.

For more species homologues information, please contact tech support at [tech@phytoab.com](mailto:tech@phytoab.com).

## Application Example



Thy-WT: thylakoid membrane protein from WT of *Arabidopsis thaliana* containing 0.5 µg of chlorophyll.

Thy-PS I mutant: thylakoid membrane protein from an *Arabidopsis* mutant with low accumulation of PS I containing 0.5 µg of chlorophyll.

**Electrophoresis:** 15% SDS- PAGE

**Transfer:** blotting to NC (nitrocellulose) membrane for 1 h.

**Blocking:** 5% skim milk at RT or 4°C for 1 h.

**Primary antibody:** 1:2000 dilution overnight at 4°C.

**Secondary antibody:** 1:10000 dilution using Goat Anti-Rabbit IgG H&L (HRP) (Cat# PHY6000)

**Detection:** using chemiluminescence substrate and image were captured with CCD camera.