

Anti-PsaN subunit of photosystem I antibody

Catalog: PHY0123A

Product Information

Description:	Rabbit polyclonal antibody
Background:	Photosystem I (PSI) is a multisubunit complex that catalyses the final stage of the light reactions in chloroplasts. PsaN is the only subunit of photosystem I located entirely in the thylakoid lumen. It may be involved in the interaction between plastocyanin and the photosystem I complex.
Synonyms:	PsaN, PSAN
Immunogen:	KLH-conjugated synthetic peptide of PsaN (15 aa from Central section) derived from <i>Arabidopsis thaliana</i> PsaN (AT5G64040).
Form:	Lyophilized
Quantity:	150 µg
Purification:	Immunogen affinity purified
Reconstitution:	Reconstitution with 150 µl of 0.01 M sterile PBS. "Note: please spin tube briefly prior to opening it to avoid any losses that might occur from lyophilized material adhering to the cap or sides of the tube".
Stability & Storage:	Use a manual defrost freezer and avoid repeated freeze-thaw cycles. 12 months from date of receipt, -20 to -70°C as supplied. 6 months, -20 to -70°C under sterile conditions after reconstitution. 1 month, 2 to 8°C under sterile conditions after reconstitution.
Shipping:	The product is shipped at 4°C. Upon receipt, store it immediately at the temperature recommended above.

Application Information

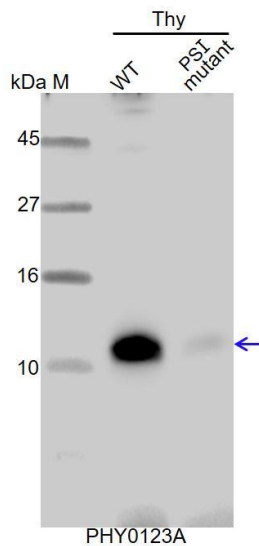
Recommended Dilution:	Western Blot (1:1000-1:2000) Note: Optimal dilutions/concentrations should be determined by the end user.
Expected / apparent MW:	19 / 12 kDa
Confirmed Reactivity:	<i>Arabidopsis thaliana</i>
Predicted Reactivity:	Among species analyzed, the sequence of the synthetic peptide used for immunization is 80-99% homologues with the sequence in

Research Use Only

Brassica napus, Vitis vinifera, Gossypium raimondii, Setaria viridis, Zea mays, Sorghum bicolor, Brassica rapa, Glycine max, Populus trichocarpa, Medicago truncatula, Cucumis sativus, Nicotiana tabacum, Sorghum bicolor, Panicum virgatum, Oryza sativa, Spinacia oleracea, Solanum lycopersicum, Hordeum vulgare, Triticum aestivum, Solanum tuberosum.

For more species homologues information, please contact tech support at tech@phytoab.com.

Application Example



Thy-WT: thylakoid membrane protein from WT of *Arabidopsis thaliana* leaf containing 0.5 µg of chlorophyll.

Thy-PS I mutant: thylakoid membrane protein from an Arabidopsis mutant with low accumulation of PS I containing 0.5 µg of chlorophyll.

Electrophoresis: Tricine-SDS-PAGE

Transfer: blotting to NC (nitrocellulose) membrane for 1 h.

Blocking: 5% skim milk at RT or 4°C for 1 h.

Primary antibody: 1:1000 dilution overnight at 4°C.

Secondary antibody: 1:10000 dilution using Goat Anti-Rabbit IgG H&L(HRP) (Cat# PHY6000).

Detection: using chemiluminescence substrate and image were captured with CCD camera.